

# Tricks-N-Treats Sale



**MISS MD J&K 7664-ET**  
SELLS AS LOT H1



**PINELAND DURHAM TAVIA3-ETN VG-86**  
DAM OF LOT H1

## H1

**MATTHEW KIMBALL**  
24344 MARBLEHEAD RD  
RIDGELY, MD 21660  
410-829-4288  
MKIMBALL441@HUGHES.NET  
WWW.HOLSTEINWORLD.COM/MD-MRK

**Den-K Marshall LL Laurin**  
132480026 Excellent-94 \*TR \*TV \*TL  
PTA +452M +27F +12P 98R 8/10  
PTA -1.0PL 2.94SCS -0.9DPR 8%DCE  
PTA +1.74T +.99UDC +1.03FLC 92R 8/10  
GTPI +1475G

**Pineland Durham Tavia3-ETN**  
138035626 Very Good-86 VG-MS @ 2-08 \*CV  
2-04 2x 247d 14510 2.8 402 3.2 458  
3-09 2x 113d 9466 2.7 261 2.8 272 RIP  
Milking 90#  
• Potential 5th generation EX-94 cow!

Maternal sister to Tavia3  
**Wilson-Dale Champion Tia-ET EX-94**

### MISS MD J&K 7464-ET

64954197  
Born: September 2, 2008

Fresh: July, 2010  
Bred: Oct. 1, 2010 to Maple-Downs-I G W Atwood-ET  
• Both 7464 & Tavia3 will be scored on 10/27

### Mara-Thon BW Marshall-ET

2290977 Very Good-86 GM 8/07 \*TV \*TL  
PTA +1292M +23F +26P 99R 8/10  
PTA +1.63T +1.37UDC +2.14FLC GTPI +1518G

### Ms Sunnyhome Lil-Lee

128573064 Excellent-90  
3-10 2x 351d 44310 3.2 1431 3.3 1477  
Life: 1662d 124691 3.1 3878 3.3 4125

### Regancrest Elton Durham-ET

2250783 Excellent-90 GM 8/01 \*TR \*CV \*TL  
PTA -332M -37F +4P 99R 8/10  
PTA +2.46T +2.32UDC +2.11FLC GTPI +1535G

### Wilsondale Emory Tenille-ET

17060861 Excellent-94 EEEEE 3E  
5-00 2x 365d 26710 3.5 948 3.1 838  
6-07 2x 365d 26260 3.5 914 3.0 792  
3-03 2x 365d 25880 3.5 916 3.2 840  
Life: 2194d 132220 3.6 4826 3.2 4248  
• Three Excellent daughters

### Show record of consignment

- 1st Milking Yearling, Premier National Junior Show 2010
- 1st Fall Yearling & Junior Champion, MD Eastern Shore Spring Show 2010
- 2nd Fall Yearling, MD Spring Jr Show 2010
- 3rd Fall Yearling, MD Spring Show 2010

Terms: Satisfaction guaranteed on pre-pickup only - see general terms

### 3rd Dam

**Wilsondale Valiant Tory-ET EX-94 EEEEE 3E DOM**  
7-00 2x 365d 26030 4.3 1123 3.4 891

### 4th Dam

**Wilsondale Ivan Tara EX-94 EEEE 4E DOM**  
8-00 2x 365d 26360 3.6 947 3.4 895  
Life: 3244d 192570 3.4 6616 3.5 5940

### 5th Dam

**Wilsondale TT Triuna EX-94 EEEEE 5E GMD DOM**  
11-8 2x 365d 25000 3.8 951 3.1 783  
Life: 4029d 241810 3.8 9084 3.1 5376

### 6th Dam

**Wilsondale Triuna VG-87**  
7-00 2x 365d 20550 3.2 664  
Life: 2124d 105600 3.4 3626

### 7th Dam

**Trina Redstone Marvel EX-91 EVEE 3E**  
Life: 3189d 116569 3.9 4528

# Tricks-N-Treats Sale



**PINELAND DURHAM TAVIA3-ETN VG-86**  
DAM OF LOT H1A



**WILSONDALE EMORY TENILLE-ET EX-94 3E**  
2ND DAM OF LOT 1A

## H1A

MATTHEW KIMBALL  
24344 MARBLEHEAD RD  
RIDGELY, MD 21660  
410-829-4288  
MKIMBALL441@HUGHES.NET  
WWW.HOLSTEINWORLD.COM/MD-MRK

### Windy-Knoll-View Pronto-ET

132815961 Excellent-95 \*TR \*TV \*TL  
PTA +543M +13F +13P 98R 8/10  
PTA +2.5PL 3.21SCS +1.9DPR 8%DCE  
PTA +2.01T +1.03UDC +1.54FLC 95R 8/10  
GTPI +1721G

### Pineland Durham Tavia3-ETN

138035626 Very Good-86 VG-MS @ 2-08 \*CV  
2-04 2x 247d 14510 2.8 402 3.2 458  
3-09 2x 113d 9466 2.7 261 2.8 272 RIP  
Milking 90#

- Potential 5th generation EX-94 cow!
- Will be scored on 10/27/10

Maternal sister to Tavia3

Wilson-Dale Champion Tia-ET EX-94

### MISS JOOK PRONTO 7318-ET

64954051  
Born: July 6, 2008

Fresh: June 5, 2010  
Milking 74# 4.2% 3.0p  
Due: June 1, 2011 to Crackholm Fever

### Comestar Outside-ET

6026421C EX-CAN EXTRA'98 GM 1/08 \*TV \*TL  
PTA +244M +35F -5P 99R 8/10  
PTA +1.40T +.97UDC +1.76FLC GTPI +1741G

### Windy-Knoll-View Promis-ET

18049401 Excellent-95 EEEEE 2E GMD DOM \*TV \*TL  
4-08 2x 365d 44120 3.7 1633 3.2 1401

- Res All-American 5-Yr-Old Cow 2003

### Regancrest Elton Durham-ET

2250783 Excellent-90 GM 8/01 \*TR \*CV \*TL  
PTA -332M -37F +4P 99R 8/10  
PTA +2.46T +2.32UDC +2.11FLC GTPI +1535G

### Wilsondale Emory Tenille-ET

17060861 Excellent-94 EEEEE 3E  
5-00 2x 365d 26710 3.5 948 3.1 838  
6-07 2x 365d 26260 3.5 914 3.0 792  
3-03 2x 365d 25880 3.5 916 3.2 840  
Life: 2194d 132220 3.6 4826 3.2 4248

- Three Excellent daughters

Terms:

Satisfaction guaranteed on pre-pickup only -  
see general terms

3rd Dam

**Wilsondale Valiant Tory-ET EX-94 EEEEE 3E DOM**  
7-00 2x 365d 26030 4.3 1123 3.4 891

4th Dam

**Wilsondale Ivan Tara EX-94 EEEE 4E DOM**  
8-00 2x 365d 26360 3.6 947 3.4 895  
Life: 3244d 192570 3.4 6616 3.5 5940

5th Dam

**Wilsondale TT Triuna EX-94 EEEEE 5E GMD DOM**  
11-8 2x 365d 25000 3.8 951 3.1 783  
Life: 4029d 241810 3.8 9084 3.1 5376

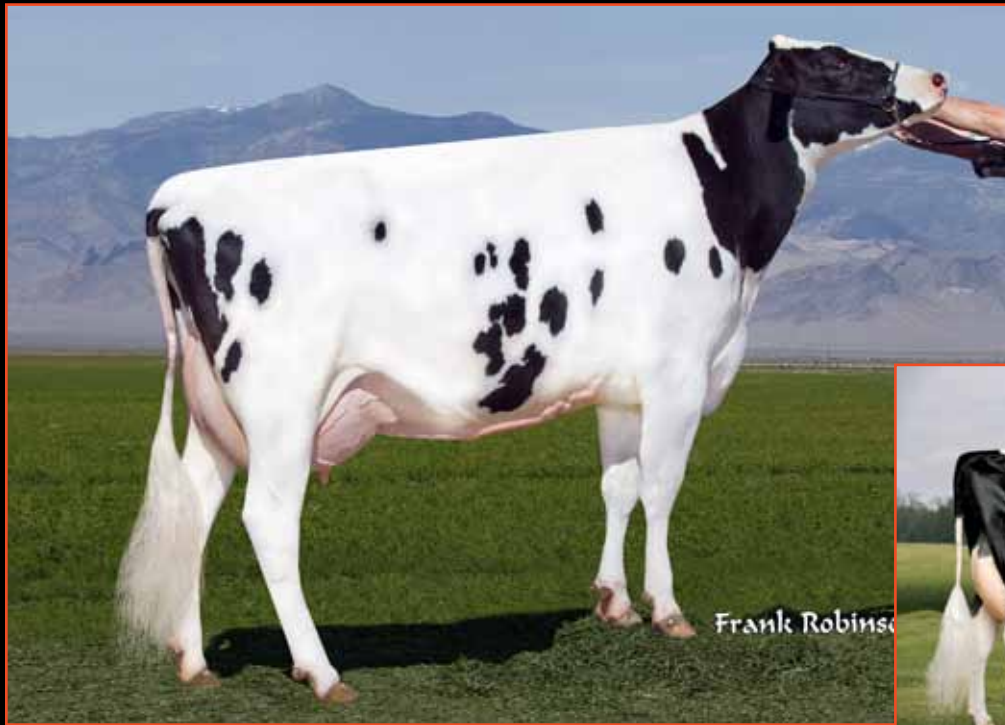
6th Dam

**Wilsondale Triuna VG-87**  
7-00 2x 365d 20550 3.2 664  
Life: 2124d 105600 3.4 3626

7th Dam

**Trina Redstone Marvel EX-91 EVEE 3E**  
Life: 3189d 116569 3.9 4528

# Tricks-N-Treats Sale



**MS ELEGANT LISA-ET VG-87**  
DAM OF LOT H2



**SAVAGE-LEIGH LICORICE-ET EX-92**  
3RD DAM OF LOT H2

## H2

ESKDALE DAIRY  
1100 CIRCLE DRIVE  
ESKDALE, UT 84728  
435-855-2474  
ESKDALEDAIRY@HOTMAIL.COM  
WWW.ESKDALEDAIRY.COM

### Ladys-Manor Ruby D Shout-ET

137002991 GM 8/10  
PTA +883M +57F +31P 94R 8/10  
PTA +2.0PL 2.73SCS -.8DPR 7%DCE  
PTA +2.32T +1.53UDC +1.49FLC 92R 8/10  
GTPI +1911G

### Ms Elegant Lisa-ET

138372271 Very Good-87 EX-MS @ 3-06  
CTPI +1824 +1066M +38F +33P +2.47T 8/10  
2-01 2x 305d 23870 3.9 935 3.6 855  
• Sons going to Accelerated and Select Sires

## FIVE #1 EMBRYOS

Exportable

### Picston Shottle-ET

GBR 598172 EX-95-GBR GM 8/08 \*TV \*TL  
PTA +1307M +66F +37P 99R 8/10  
PTA +3.11T +2.23UDC +2.16FLC GTPI +2078G

### Ladys-Manor Ruby D-ET

60462691 Excellent-90 EEVVE @ 5-05 GMD DOM  
4-10 2x 365d 39790 5.3 2127 3.6 1416  
Life: 1279d 124840 5.1 6335 3.6 4522

### Honeycrest Elegant-ET

130629351 GM 1/08 \*TV  
PTA +995M +24F +21P 99R 8/10  
PTA +1.89T +2.40UDC +1.27FLC GTPI +1797G

### Savage-Leigh Licorice-ET

61604140 Very Good-87 VVVVV @ 4-00  
GTPI +1651 +2.95T +2.34UDC +2.97FLC 8/10  
2-03 2x 305d 23080 3.9 911 3.2 741

### 4th through 9th Dams

#### Savage-Leigh Bellwood Linda EX-92 2E GMD DOM

2-10 2x 365d 40240 5.8 2349 3.4 1358

Life: 1312d 126760 5.2 6576 3.2 4076

• Nom All-American Jr 3-Yr-Old Cow 1999

#### Savage-Leigh Star Linda-ET VG-87 EX-MS GMD

2-02 2x 365d 30890 4.0 1236 3.1 952

#### Savage-Leigh Glenview Linda EX-90 GMD

6-08 2x 365d 41820 4.6 1936 3.0 1247

Life: 1892d 150300 4.4 6636 3.2 4813

#### Savage-Leigh Lindas Chairman GP-84

5-10 2x 365d 30620 3.8 1167 3.3 1013

Life: 1972d 121550 3.9 4718 3.3 4013

#### Savage-Leigh Creek Lydia VG-88 VVVV

4-11 2x 344d 16390 4.2 685 3.1 511

#### Savage-Leigh Kate Linda VG-85

6-01 2x 305d 19940 4.0 793

### Hartline Titanic-ET

123066734 EX-CAN GM 1/08 \*TV \*TL

PTA +758M +22F +24P 99R 8/10

PTA +1.63T +1.43UDC +2.46FLC GTPI +1463G

### Savage-Leigh Licorice-ET

60317090 Excellent-92 EEVVEE GMD DOM \*TV

CTPI +2176 +1589M +98F +55P +4.27T 8/09

4-02 2x 365d 51220 4.3 2179 3.1 1596

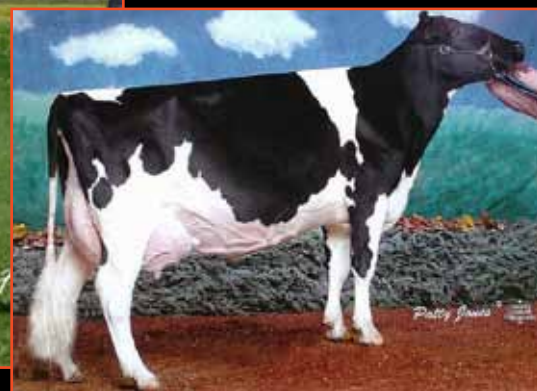
Life: 1018d 113740 4.4 4968 3.2 3643

• HHM All-American 5-Yr-Old Cow

# Tricks-N-Treats Sale



**PINTAIL-POINT R GOLDIE EX-90**  
DAM OF LOT H3



**BRIGEEN SKYCHIEF ROSE EX-93**  
MATERNAL SISTER TO 2ND DAM OF LOT H3

## H3

JEFFREY WOODS  
WW ASSOCIATES  
222 N MIDVALE BLVD STE 4  
MADISON, WI 53705  
608-836-8702

### England-Ammon Million-ET

61547476 Excellent-92 \*TR \*TV \*TL \*TD  
PTA +719M +57F +20P 93R 8/10  
PTA +2.5PL 2.88SCS -0.5DPR 8%DCE  
PTA +2.30T +2.22UDC +1.52FLC 90R 8/10  
GTPI +1885G

### Pintail-Point R Goldie

137329588 Excellent-90 EX-MS @ 4-01  
CTPI +1801 +291M +29F +27P +2.26T 8/10  
3-03 2x 365d 28690 3.8 1102 3.6 1024  
2-00 2x 305d 23430 3.6 843 3.3 779

*Maternal sister to Durham Roxanne*

### Brigeen Skychief Rose EX-93 EEEEE

• Reserve All-Canadian 4-Year-Old 2003

## FIVE #1 EMBRYOS

Sexed semen  
Exportable  
• Embryos are at Sunshine Genetics

### Comestar Outside-ET

6026421C EX-CAN EXTRA'98 GM 1/08 \*TV \*TL  
PTA +244M +35F -5P 99R 8/10  
PTA +1.40T +.97UDC +1.76FLC GTPI +1741G

### Regancrest-HHF Maya-ET

60531869 Very Good-85 VG-MS @ 2-10  
2-04 3x 365d 24240 4.0 971 3.3 789

### Braedale Goldwyn

10705608C GP-CAN EXTRA'05 GM 8/08 \*TV \*TL  
PTA +424M +49F +28P 99R 8/10  
PTA +3.34T +2.53UDC +2.20FLC GTPI +2078G

### Brigeen Durham Roxanne-ET

135454448 Excellent-90 EEEV @ 4-00  
3-04 2x 365d 36640 3.4 1263 3.4 1233  
1-11 2x 365d 28500 3.6 1029 3.5 992

### 4th Dam

**C Hanoverhill Roxette-ET EX-95 2E**  
5-05 3x 365d 34060 3.6 1233 3.3 1140  
Life: 1407d 109400 3.8 4135 3.7 4016

### 5th Dam

**Mil-R-Mor Roxette EX-90 GMD DOM 30\***  
7-01 2x 365d 24530 4.7 1153

### 6th Dam

**C Glenridge Citation Roxy EX-97 4E GMD 6\***  
Life: 3620d 209784 4.5 9471

### 7th Dam

**C Norton Court Model Vee EX-90 6\***  
Life: 4183d 218629 3.9 8581

• All-American Produce of Dam 1977 - 1979

### 8th Dam

**Norton Court Reflection Val VG-85 5\***  
Life: 14 Lact 249583 3.7 9295

### Regancrest Elton Durham-ET

2250783 Excellent-90 GM 8/01 \*TR \*CV \*TL  
PTA -332M -37F +4P 99R 8/10  
PTA +2.46T +2.32UDC +2.11FLC GTPI +1535G

### Hanoverhill Star Roxet-ET

14962210 Excellent-91 EEEEE 2E GMD  
5-09 2x 365d 39730 4.6 1827 3.5 1379  
3-04 2x 365d 27260 4.5 1222 3.6 978  
4-06 2x 365d 25410 4.2 1060 3.5 884  
Life: 2653d 171580 4.6 7817 3.7 6272

# Tricks-N-Treats Sale



**BAR-LEE MARKER MANDY-RED-ET EX-94 3E**  
DAM OF LOT H4



**GREENLEA RUB MARLENE-RED-ET EX-94**  
MATERNAL SISTER TO LOT H4

## H4

DAVID MYERS  
1089 EDEN RD  
ABILENE, KS 67410  
785-280-1200

### Lystel Starfire-ET

7221650C ST'06 \*RC \*TV \*TL  
PTA -577 -4F -4P 97R 8/10  
PTA +1.7PL 3.13SCS +1.7DPR 9% DCE  
PTA +1.36T +1.72UDC +.63FLC 95R 8/10  
TPI +1539M

### Bar-Lee Marker Mandy-Red-ET

17225391 Excellent-94 EEEEE 3E  
6-08 2x 365d 25810 3.8 974 3.1 791  
2-07 2x 365d 25249 3.7 923 3.2 800  
Life: 2148d 128689 4.0 5183 3.4 4378  
• All-American 5-Year-Old Cow 2002  
• Res All-American Sr 3-Year-Old Cow 2000  
• All-American Sr 2-Year-Old Cow 1999

### GREENLEA STARFIRE MACI-ET

68748875 \*RC  
Born: September 2, 2009

Terms:  
Satisfaction guaranteed - see general terms

### STBVQ Rubens-ET

5844883C VG-88-CAN ST'98 GM 8/04  
PTA -594M -20F +OP 99R 8/10  
PTA +1.31T +1.91UDC +.25FLC GTPI +1376G

### Comestar L Or Black-ET

5311227C VG-87-CAN 16\*  
3-11 2x 365d 35745 3.7 1325 3.1 1124  
2-00 2x 365d 22871 3.8 866 3.2 743

### Indianhead Red-Marker-ET

2284915 EX-CAN \*RC \*TV \*TL  
PTA -1702M -60F -68P 99R 8/10  
PTA +1.54T +.78FLC +.36FLC GTPI +786G

### Bar-Lee Ms Marcy-Red-ET

15652587 Excellent-92 EEEV @ 5-07  
4-10 2x 305d 25610 4.6 1180 3.5 892  
2-03 2x 365d 22720 4.3 972 3.5 792  
• All-American R&W Sr Two-Year-Old 1997

Maternal sister to Starfire Maci

### Greenlea Rub Marlene-Red-ET EX-94 EEEEE

5-06 2x 365d 34600 3.7 1272 3.2 1113  
• Res All-American R&W Aged Cow 2008  
• All-American R&W 5-Year-Old Cow 2007  
• Res All-American 4-Year-Old 2006  
• All-American R&W Sr 3-Year-Old Cow 2005  
• All-American R&W Sr 2-Year-Old Cow 2004

4th Dam

**Beaulain Milki Volcan VG-86-CAN 4\***  
5-01 2x 305d 29930 3.5 1060 2.9 875  
Life: 5 Lact 129985 3.6 4687 3.1 4004

5th Dam

**Beaulain Millie Merit VG-CAN 8\***  
9-11 2x 305d 16759 3.6 604 3.2 531

### Brooknook Milestone-Red-ET

400985C EX-CAN EXTRA'95 \*TL  
PTA -1169M +30F -19P 99R 8/10  
PTA -.64T -1.35UDC -.90FLC GTPI +1114G

### C Filiale Jubilant Mali-Red

15105813 EX-91 EEEEE @ 4-10  
2-02 2x 365d 30350 3.6 1091 2.9 885  
5-07 2x 305d 22500 4.0 892 3.4 769  
• Res All-American Senior Two-Year-Old 1993  
• 2nd Sr Two-Yr-Old, Internat'l Show 1993

# Tricks-N-Treats Sale



OCEAN-VIEW DURHAM ZANDRA-ET EX-91  
3RD DAM OF LOT H5



MEL-TINA JET ZANDRA  
SELLS AS LOT H5

## H5

MEDEIROS HOLSTEINS  
808 COLEMAN AVE  
LATON, CA 93242  
559-816-1121  
MEL-TINAMEDEIROS@SBCGLOBAL.NET

### Fradon Jet-Red-ET

7825836C GP-83-CAN \*TV \*TL  
PTA -624M -33F -18P 73R 8/10  
PTA +2.9PL 2.93SCS +.7DPR 9%DCE  
PTA +1.27T +1.28UDC -.50FLC 67R 8/10  
GTPI +1380G

### Johnan Advent Zoie-ET

53457327 Very Good-86 VG-MS @ 2-09 \*RC  
• 63" tall two-year-old!

*Maternal sisters to Dundee Zandra*

Ocean-View Derry Zadore VG-89  
Ocean-View Blitz Zandra VG-88  
Ocean-View Allen Zandria VG-88

### MEL-TINA JET ZANDRA

69443245 \*RC  
Born: December 15, 2009  
• Heifer is 53" tall  
• Buyer satisfaction guaranteed  
• \$500 of trucking bill will be paid by seller

### Ladino Park Talent-Imp-ET

AUS 930377 Excellent-90 ST'03 \*RC \*TV \*TL  
PTA -211M -29F +5P 99R 8/10  
PTA +2.04T +2.30UDC +.85FLC GTPI +1435G

### Fradon R Mark Jodie-Red

8237577C EX-91-2E-CAN 2\*  
4-10 2x 365d 31640 3.7 1162 3.0 950  
• HM All-American R&W Jr 3-Year-Old 2004

### KHW Kite Advent-Red-ET

133002953 Excellent-94 \*TV \*TL \*TD  
PTA -1252M -19F -28P 99R 8/10  
PTA +2.39T +2.16UDC +1.60FLC GTPI +1428G

### Ocean-View Dundee Zandra-ET

136421634 Very Good-88 VEVVE @ 4-01 \*TV  
2-02 2x 365d 25220 4.4 1108 3.4 863  
4-00 2x 264d 22020 5.1 1113 3.5 761

### 4th Dam

Ocean-View Mandel Zandra EX-95 2E GMD  
3-09 2x 365d 37710 4.2 1597 3.5 1325  
Life: 1774d 148270 4.6 6748 3.7 5433  
• 1st Aged Cow, Western Spring Nat'l 2002

### 5th Dam

Moore-Farms Sexy Zandra EX-92 EEEEE GMD  
3-08 2x 365d 36000 4.0 1422 3.1 1107  
Life: 2832d 263670 3.8 10103 3.2 8476  
• Three Excellent full sisters

### 6th Dam

Moore-Farms Valiant Smurf EX-90 GMD DOM  
Life: 2198d 170890 4.4 7454 3.4 5751

### 7th Dam

Moore-Farms Snooty Elevation EX-91 2E EX-MS  
Life: 1773d 107780 4.1 4446 3.1 3340

### 8th Dam

Moore-Farms Fond Snoop-Twin VG-86  
Life: 1982d 124690 4.4 5458 3.3 2286

### Regancrest Dundee-ET

127640114 Excellent-95 \*TV \*TL  
PTA -489M -25F -10P 99R 8/10  
PTA +2.04T +2.12UDC +.84FLC GTPI +1268G

### Ocean-View Durham Zandra-ET

129449821 Excellent-91 EEVEE \*CV GMD DOM  
3-04 2x 365d 38160 3.8 1441 3.4 1287  
2-04 2x 317d 28280 3.6 1014 3.4 951  
• Res Int Champion, CA State Show 2003  
• California Futurity Champion 2003

# Tricks-N-Treats Sale



OCEAN-VIEW DURHAM ZANDRA-ET EX-91  
3RD DAM OF LOT H6

## H6

MEDEIROS HOLSTEINS  
808 COLEMAN AVE  
LATON, CA 93242  
559-816-1121  
MEL-TINAMEDEIROS@SBCGLOBAL.NET

### Kingsmill Gdwyn Asteroid-ET

63016175 Very Good-85 \*TV \*TL  
PTA -747M +8F -19P 78R 8/10  
PTA -1.3PL 2.90SCS -1.0DPR 10%DCE  
PTA +2.69T +1.32UDC +2.15FLC 73R 8/10  
GTPI +1364G

### Johnan Advent Zoie-ET

53457327 Very Good-86 VG-MS @ 2-09 \*RC  
• 63" tall two-year-old!

*Maternal sisters to Dundee Zandra*

**Ocean-View Derry Zadore VG-89**  
**Ocean-View Blitz Zandra VG-88**  
**Ocean-View Allen Zandria VG-88**

## FIVE #1 EMBRYOS

Not exportable

### Braedale Goldwyn

10705608C GP-CAN EXTRA'05 GM 8/08 \*TV \*TL  
PTA +424M +49F +28P 99R 8/10  
PTA +3.34T +2.53UDC +2.20FLC GTPI +2078G

### Tri-Day Ashlyn-ET

17181481 Excellent-96 EEEEE 2E GMD DOM  
4-09 2x 365d 43090 4.8 2079 3.5 1503  
• All-Time All-American 4 Year Old Cow

### KHW Kite Advent-Red-ET

133002953 Excellent-94 \*TV \*TL \*TD  
PTA -1252M -19F -28P 99R 8/10  
PTA +2.39T +2.16UDC +1.60FLC GTPI +1428G

### Ocean-View Dundee Zandra-ET

136421634 Very Good-88 VEVVE @ 4-01 \*TV  
2-02 2x 365d 25220 4.4 1108 3.4 863  
4-00 2x 264d 22020 5.1 1113 3.5 761

### 4th Dam

#### Ocean-View Mandel Zandra EX-95 2E GMD

3-09 2x 365d 37710 4.2 1597 3.5 1325  
Life: 1774d 148270 4.6 6748 3.7 5433

• 1st Aged Cow, Western Spring Nat'l 2002

### 5th Dam

#### Moore-Farms Sexy Zandra EX-92 EEEEE GMD

3-08 2x 365d 36000 4.0 1422 3.1 1107  
Life: 2832d 263670 3.8 10103 3.2 8476

• Three Excellent full sisters

### 6th Dam

#### Moore-Farms Valiant Smurf EX-90 GMD DOM

Life: 2198d 170890 4.4 7454 3.4 5751

### 7th Dam

#### Moore-Farms Snooty Elevation EX-91 2E EX-MS

Life: 1773d 107780 4.1 4446 3.1 3340

### 8th Dam

#### Moore-Farms Fond Snoop-Twin VG-86

Life: 1982d 124690 4.4 5458 3.3 2286

### Regancrest Dundee-ET

127640114 Excellent-95 \*TV \*TL  
PTA -489M -25F -10P 99R 8/10  
PTA +2.04T +2.12UDC +.84FLC GTPI +1268G

### Ocean-View Durham Zandra-ET

129449821 Excellent-91 EEEVE \*CV GMD DOM  
3-04 2x 365d 38160 3.8 1441 3.4 1287  
2-04 2x 317d 28280 3.6 1014 3.4 951

• Res Int Champion, CA State Show 2003

• California Futurity Champion 2003

# Tricks-N-Treats Sale

## H7

WILLIAM KARRELS  
1125 DIXIE ROAD  
PORT WASHINGTON, WI 53074  
262-707-3998  
WJKARRELS@MSN.COM

### Comestar Outside-ET

6026421C EX-CAN EXTRA'98 GM 1/08 \*TV \*TL  
PTA +255M +35F -5P 99R 8/10  
PTA +4.5PL 2.96SCS +1.2DPR 10%DCE  
PTA +1.44T +1.05UDC +1.73FLC 99R 8/10  
GTPI +1746G

### Integrity Warrior Lavia

133020919 Excellent-90 EEEEE 2E  
4-09 2x 365d 32460 4.2 1360 3.1 998  
2-00 2x 365d 23310 4.4 1014 3.2 737

## FIVE #1 EMBRYOS

Not exportable

• Maternal family of Snowman!

### Ronnybrook Prelude-ET

392457C GP-81-CAN GM 8/97 \*TL \*TD  
PTA -970M +21F -25P 99R 8/10  
PTA -.92T -1.24UDC +.62FLC GTPI +1178G

### Comestar L Or Black-ET

5311227C VG-87-CAN 23\*  
3-11 2x 365d 35745 3.7 1325 3.0 1056  
2-00 2x 365d 22871 3.8 866 3.1 700

### Ladys-Manor Warrior-ET

2297600 Excellent-91 GM 8/07 \*TR \*TV \*TL \*TV  
PTA +865M +59F +20P 99R 8/10  
PTA +.20T +.09UDC -.26FLC GTPI +1557G

### Integrity Stinky Lutefisk-ET

129755568 Very Good-87 VG-MS @ 4-10  
3-00 2x 365d 24010 4.6 1103 3.0 728  
4-05 2x 307d 19920 4.3 850 3.0 591  
2-00 2x 293d 17670 4.6 813 3.0 537

Full sister to embryos

### Integrity OS Lavidia

• #20 GTPI Outside daughter

4th Dam

**Integrity Leatherette-ET** GP-81 \*BL  
2-00 2x 305d 21240 3.9 819 3.0 845

5th Dam

**Ever-Green-View Latex-ET** VG-88 GMD DOM \*BL  
3-02 2x 305d 28530 3.8 1098 3.0 868

6th Dam

**Ever-Green-View Le Grant-ET** EX-90 2E GMD  
4-00 3x 365d 50280 3.7 1874 3.1 1576  
Life: 915d 102770 3.8 3856 3.2 3296

7th Dam

**Ever-Green-View Leisure** EX-91 2E GMD DOM  
7-07 3x 365d 48190 3.7 1788 3.0 1461  
Life: 1411d 144420 3.8 5477 3.1 4497

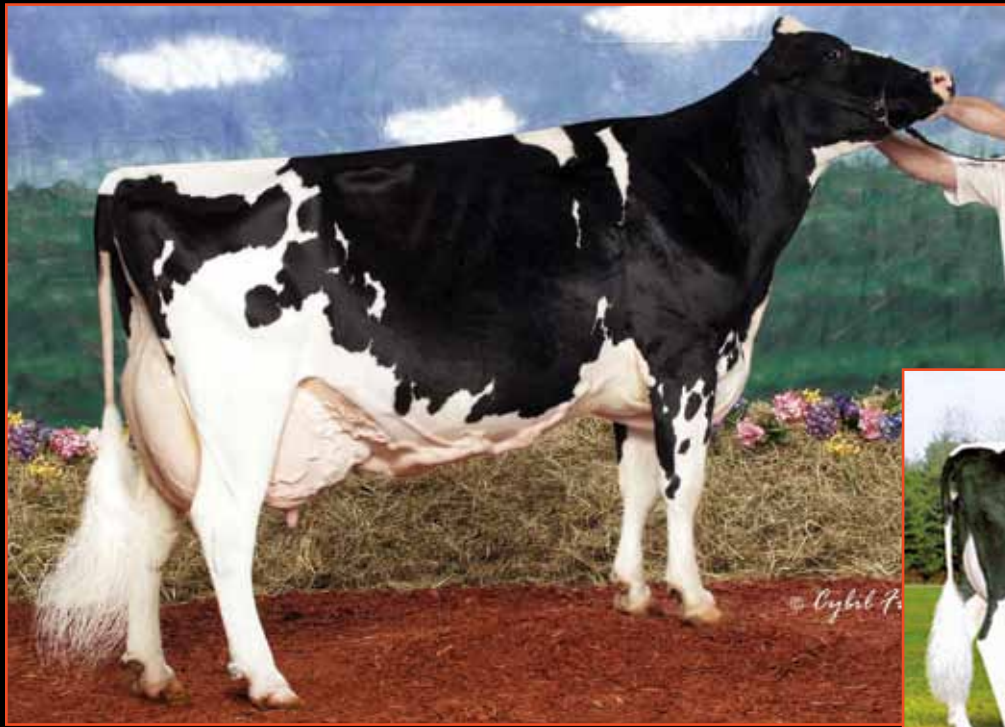
### Weaverline Bench Eddie-ET

2245673 Excellent-94 GM 803 \*TV \*TL  
PTA +184M +38F +5P 99R 8/10  
PTA -.15T -.32UDC -.20FLC GTPI +1291G

### Integrity Mnfrd Larosa-ET

125198871 Fair-74 @ 2-05  
2-00 2x 145d 8520 3.8 322 3.1 266

# Tricks-N-Treats Sale



**SHOREMAR S ALICIA-ET EX-97 EEEEE 3E**  
4TH DAM OF LOT H8



**CITYVIEW ALEECIA VG-86-2YR-CAN**  
2ND DAM OF LOT H8

## H8

STOCKHAVEN HOLSTEINS  
3313 16TH STREET SW  
BACKUS, MN 56435  
218-587-4035  
BNSTOCKMAN@USLINK.NET

**Dream-Prairie Shadow Boxer**  
139086241 Very Good-86 \*TR\*TV\*TL\*TD  
PTA +831M +78F +45P 77R 8/10  
PTA +3.7PL 2.72SCS -1.5DPR 8%DCE  
PTA +3.43T +2.60UC +2.78FLC 72R 8/10  
GTPI +2210G

**Shoremar Fortune Alyssa-ET**  
62738492 Very Good-85 VG-MS @ 3-00

*Full sisters to Alyssa*

**Shoremar Fortune 31808-ET VG-87**  
**Shoremar Fortune 944-ET VG-86**

## FIVE #1 EMBRYOS

Not exportable

### Picston Shottle-ET

GBR 598172 EX-95-GBR GM 8/08 \*TV\*TL  
PTA +1307M +66F +37P 99R 8/10  
PTA +3.11T +2.23UDC +2.16FLC GTPI +2047G

### Regancrest Gold Bretta-ET

62496942 Very Good-88 VEVVV DOM \*TL  
2-01 3x 365d 34610 4.8 1676 3.8 1314

### To-Mar D-Fortune-ET

129922003 Excellent-91 \*TR\*TV\*TL  
PTA -1603M -27F -6P 99R 8/10  
PTA +1.57T +1.57UDC +.70FLC GTPI +1367G

### Cityview Aleecia

9351091C VG-86-2YR-CAN \*BL  
2-03 2x 365d 28217 4.3 1213 3.3 939  
6-07 2x 365d 24288 4.3 1034 3.1 745

### 4th Dam

#### Shoremar S Alicia-ET EX-97 EEEEE 3E 5\* \*BL

6-10 2x 365d 35760 4.3 1544 3.4 1215  
5-02 2x 365d 33570 4.2 1414 3.5 1177

Life: 5 Lact 163892 4.2 6819 3.3 5485

• *HHM All-American 125,000 Lb. Cow 2005*

• *Res All-American Aged Cow 2004*

• *All-American Aged Cow 2003*

### 5th Dam

#### C Aitkenbrae Starbuck Ada EX-94 EEEE 2E DOM

13-8 2x 365d 25150 3.0 764 3.4 843

Life: 6 Lact 137732 3.4 4749 3.4 4647

• *All-American Produce of Dam 2000, 2001*

• *All-American 3-Yr-Old Cow 1990*

• *Res All-Time All-American Sr 3-Yr-Old*

### Comestar Lee-ET

5757117C EX-CAN GM 8/03 \*TV\*TL

PTA -559M +18F -8P 99R 8/10

PTA +1.19T +.53UDC +1.09FLC GTPI +1375G

### Cityview R Alicia

10593274C EX-92-CAN 19\* \*BL

6-08 3x 365d 42505 3.5 1508 3.1 1325

4-04 3x 365d 35554 3.8 1336 3.2 1138

2-02 3x 313d 25474 3.9 992 3.1 820

Life: 3 Lacs 123753 3.8 4658 3.3 4023

• *1 Superior Lactation*

# Tricks-N-Treats Sale



**RIDEAULAKES SKYCHIEF BLACKY EX-2E-CAN**  
2ND DAM OF LOT H9



**MARBRI LINJET BELL EX-91-4E-CAN**  
MATERNAL SISTER TO LOT H9

## H9

**BRYAN CHICOINE**  
4774 SNAKE MOUNTAIN RD  
WEYBRIDGE, VT 05753  
802-324-1785  
BCHICOIN@GMAIL.COM

### Allyndale-I Attic-ET

8956386C GP-83-2YR-CAN \*TV \*TL  
PTA +86M +43F +21P 78R 8/10  
PTA +2.2PL 2.71SCS -0.7DPR 7%DCE  
PTA +3.28T +2.43UDC +2.33FLC 73R 8/10  
GTPI +1939G

### Breeze Hill Storm Barb-ET

10623628C VG-88-9YR-CAN  
9-01 2x 320d 27533 4.0 1107 3.0 829  
5-01 2x 339d 29852 3.2 944 3.0 902  
6-02 2x 287d 24378 3.7 893 3.1 750  
4-00 2x 313d 24822 3.2 794 3.0 752  
8-01 2x 296d 24129 3.3 789 3.0 721  
Life: 7 Lacs 176282 3.5 6151 3.1 5390

## FIVE #1 EMBRYOS

Exportable

• Embryos located at Embryobec in Quebec

Maternal sister to embryos

### Marbri Linjet Bell EX-91-4E

6-07 2x 365d 36596 3.4 1228 3.2 1175  
Life: 6 Lacs 151848 3.6 5489 3.2 4839

### Braedale Goldwyn

10705608C GP-CAN EXTRA'05 GM 8/08 \*TV \*TL  
PTA +424M +49F +28P 99R 8/10  
PTA +3.34T +2.53UDC +2.20FLC GTPI +2078G

### MD-Delight Durham Atlee

65249841 Excellent-92 DOM  
2-08 2x 365d 32520 4.3 1400 3.1 1013  
• Unanimous All-American Sr 3-Year-Old 2005

### Maughlin Storm-ET

5457798C EX-CAN GM 8/04 \*B/R \*TV \*TL  
PTA -50M +28F -2P 99R 8/10  
PTA +1.14T +.77UDC +1.48FLC GTPI +1434G

### Rideaulakes Skychief Blacky

4785795C EX-2E-CAN 19\*  
5-04 2x 365d 30020 3.2 963 2.9 884  
4-01 2x 365d 28589 3.3 952 3.1 884  
6-08 2x 305d 27853 3.4 946 2.9 807  
Life: 6 Lacs 156864 3.3 5170 3.0 4771  
• Dam of 5 EX and 11 VG daughters

Maternal sisters to Storm Barb

### Breeze Hill Aero Barb-ET EX-94-6E-CAN

6-07 2x 334d 24786 3.8 941 3.2 805  
Life: 8 Lacs 171924 3.8 6521 3.3 5672

### Breeze Hill Storm Platinum-ET EX-91-3E-CAN

5-02 2x 365d 30695 3.5 1080 2.9 884  
Life: 6 Lacs 159461 3.3 5225 2.9 4632

### Breeze Hill Astre Silver EX-2E-CAN

7-10 2x 341d 27344 3.6 979 3.0 816  
Life: 6 Lacs 145448 3.6 5198 3.1 4519

• Grand Champion, Carleton-Russell 1999

### Breeze Hill Rudolph Beckie EX-90-3E-CAN

5-10 2x 365d 35723 3.4 1217 3.2 1131  
Life: 6 Lacs 152378 3.5 5377 3.2 4835

### Breeze Hill Aero Buffy EX-90-3E-CAN

5-00 2x 365d 32489 3.6 1160 3.1 1005  
Life: 6 Lacs 165285 3.8 6281 3.1 5082

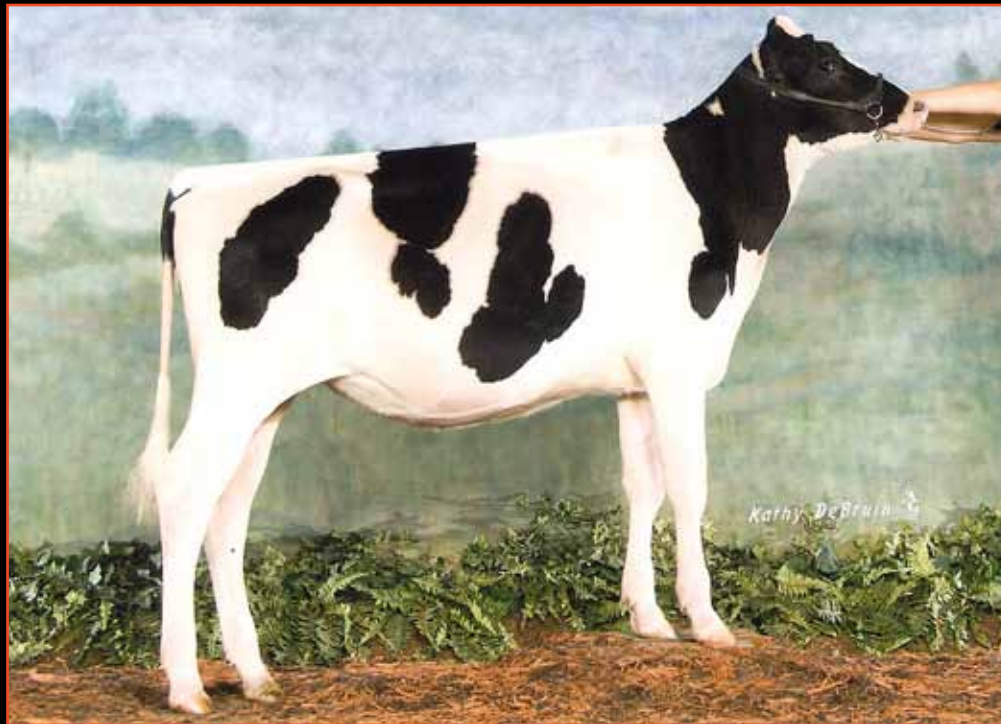
### Donnandale Skychief-ET

391661C EX-CAN GM 2/01 \*TL  
PTA -338M -13F -12P 99R 8/10  
PTA +1.07T +.83UDC -.96FLC TPI +1359M

### Crosby Black Beauty

4155376C VG-85-3YR-CAN  
5-07 2x 365d 24085 4.2 1001 3.2 783  
8-01 2x 338d 21413 4.5 968 3.3 716  
3-04 2x 365d 21815 3.9 847 3.2 708  
Life: 7 Lacs 134950 4.1 5553 3.3 4480

# Tricks-N-Treats Sale



**OVERSIDE MILLION AMY**  
SELLS AS LOT H10

## H10

DUSTY SCHIRM  
6423 BLAINE  
POPLAR GROVE, IL 61065  
330-437-5593  
DUSTINSCHIRM@YAHOO.COM

### England-Ammon Million-ET

61547476 Excellent-92 \*TR \*TV \*TL \*TD  
PTA +719M +57F +20P 93R 8/10  
PTA +2.5PL 2.88SCS -0.5DPR 8%DCE  
PTA +2.30T +2.22UDC +1.52FLC 90R 8/10  
GTPI +1885G

### Overside Sep Storm April

64774470 Good-79 @ 2-05

### OVERSIDE MILLION AMY

66404438  
Born: December, 2009  
• 1st Winter Calf & Reserve Junior Champion,  
IL District Show 2010

### Comestar Outside-ET

6026421C EX-CAN EXTRA'98 GM 1/08 \*TV \*TL  
PTA +244M +35F -5P 99R 8/10  
PTA +1.40T +.97UDC +1.76FLC GTPI +1741G

### Regancrest-HHF Maya-ET

60531869 Very Good-85 VG-MS @ 2-10  
2-04 3x 365d 24240 4.0 971 3.3 789

### Pursuit September Storm-ET

6820564C EX-CAN ST'02 GM 2/07 \*TV \*RC \*TL  
PTA -230M +34F -12P 99R 8/10  
PTA +1.98T +1.55UDC +2.73FLC GTPI +1494G

### Miss Luck-E Milan Abilene

128463965 Excellent-91 EX-MS 2E  
9-00 3x 305d 31590 4.9 1547 3.4 1089  
3-09 2x 287d 23140 4.1 943 3.2 752  
2-02 2x 365d 19410 4.3 843 3.4 665

Terms:

Satisfaction guaranteed - see general terms

4th Dam

### Maughlin Matinee Angie VG-85-CAN 2\*

5-04 2x 308d 16537 3.8 622 3.1 507  
• 1st 3-Year-Old, Bruce-Grey 1988

5th Dam

### Maughlin Alice A VG-85-CAN

3-02 2x 316d 21651 3.5 754 3.1 666  
Life: 6 Lacs 111861 3.4 3823 3.0 3305

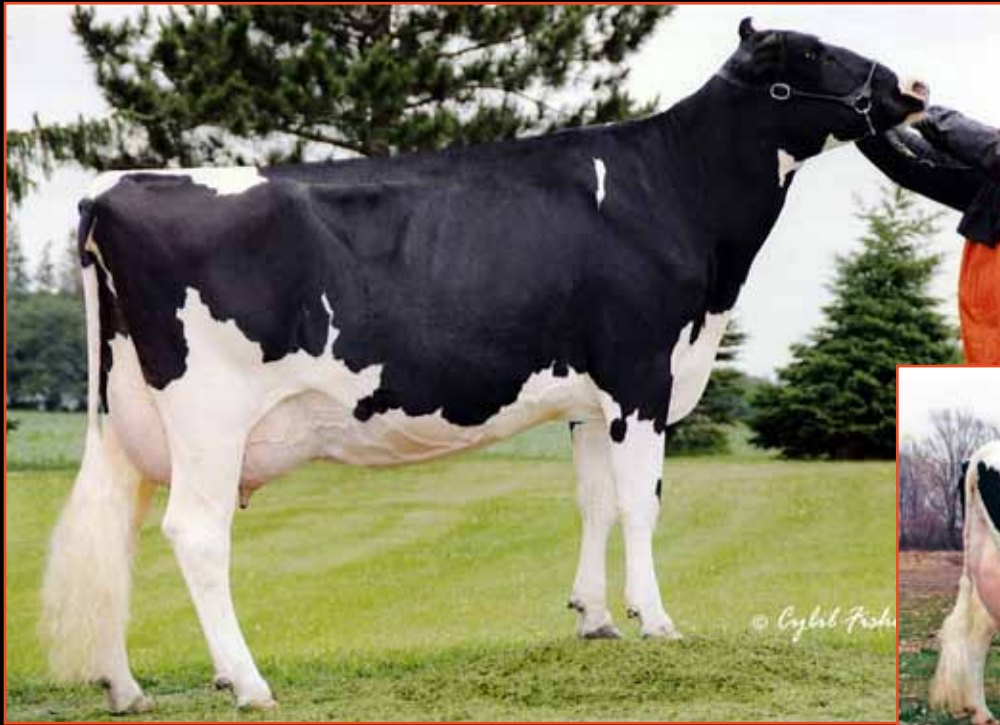
### Shoremar Milan-ET

5402550C EX-CAN \*TV \*TL  
PTA -1140M -35F -32P 99R 8/10  
PTA +.65T +.68UDC -1.85FLC GTPI +1158G

### Elleeta Skybuck Angie

6058731C Excellent-92 EEEVE 3E  
5-07 2x 365d 30480 5.0 1513 3.4 1037  
6-10 2x 365d 32100 4.5 1451 3.2 1016  
8-02 2x 365d 27260 4.8 1301 3.4 939  
Life: 2445d 169430 4.9 8286 3.4 5790

# Tricks-N-Treats Sale



**INDIANHEAD NIGHTLIFE EX-92 2E**  
DAM OF LOT H11



**INDIANHEAD NIGHTLIFE EX-94 4E**  
2ND DAM OF LOT H11

## H11

BRU-LEE HOLSTEINS  
W2047 HILBERT RD  
HILBERT, WI 54129  
920-483-0852  
BRULEE1965@YAHOO.COM

**Fradon Redliner-Red-ET**  
7528698C VG-86-CAN \*TV \*TL  
PTA +271M -10F +6P 96R 8/10  
PTA +.2PL 3.02SCS -1.8DPR 8%DCE  
PTA +1.99T +1.52UDC -.19FLC 91R 8/10  
GTPI +1403G

**Indianhead Nightlife**  
132815233 Excellent-92 EEVVE 2E \*RC \*TL \*TD  
5-03 3x 365d 36330 4.0 1464 3.2 1148  
3-11 3x 365d 35680 3.9 1405 3.0 1066  
6-08 3x 365d 30900 3.9 1194 3.0 919  
2-08 3x 365d 29150 4.2 1233 3.1 915  
Life: 1584d 138640 4.0 5599 3.1 4292

### FOUR #1 EMBRYOS

Exportable to certain countries  
• Eggs are trypsin washed, but cow is untested

**Ladino Park Talent-Imp-ET**  
AUS 930377 Excellent-90 ST'03 \*RC \*TV \*TL  
PTA -211M -29F +5P 99R 8/10  
PTA +2.04T +2.30UDC +.85FLC GTPI +1435G

**Fradon Rudolph Jodie-ET**  
6979772C EX-2E-CAN \*RC 6\*  
4-03 2x 365d 33237 4.5 1479 3.2 1069  
Life: 5 Lact 132951 3.9 5247 3.2 4306

**Markwell Kite-ET**  
128460878 EX-CAN ST'04 \*RC \*TV \*TL  
PTA -1295M -27F -39P 99R 8/10  
PTA +2.00T +1.13UDC -.29FLC GTPI +845G

**Indianhead Nightlite**  
15688891 Excellent-94 EEEEE 4E  
5-10 3x 365d 48280 3.6 1717 2.8 1349  
8-08 2x 365d 43500 3.3 1420 2.8 1205  
4-04 3x 365d 40400 3.9 1569 3.0 1212  
7-03 3x 365d 38000 3.8 1451 3.1 1176  
Life: 3375d 315100 3.7 11728 3.1 9725

#### 4th Dam

**Indianhead Mars Nellie EX-90 VEEE 2E GMD**  
5-08 3x 365d 30870 3.7 1133 2.8 854  
Life: 1480d 107190 3.7 3927 2.8 3040

#### 5th Dam

**Alpine-Haven Roburke Nickie EX-92 4E GMD**  
7-04 3x 365d 28030 3.7 1047 3.0 834  
Life: 3045d 215010 3.7 8053 2.9 4900

#### 6th Dam

**Alpine-Haven Charlans Nickie VG-85**  
4-05 2x 365d 24150 3.7 904

#### 7th Dam

**Alpine-Haven Princess Charlan VG-88 VVVV**  
4-03 2x 356d 19530 3.8 736

#### Boulet Charles-ET

395671C EX-CAN \*B/R \*TV \*TL  
PTA -1339M -10F -22P 99R 8/10  
PTA +.49T -.33UDC +.39FLC GTPI +1238G

#### Indianhead Chairman Nuance

12754665 Excellent-91 EEEEE 3E GMD  
6-11 3x 365d 36660 3.5 1278 2.9 1045  
5-04 3x 365d 34110 3.5 1180 3.0 1016  
8-04 3x 365d 32380 3.4 1096 2.9 937  
Life: 1918d 167310 3.5 5937 2.9 4914

# Tricks-N-Treats Sale



HEPP-HAVEN LISA OF PINEHURST EX-96 3E  
3RD DAM OF LOT H12



PINEHURST LIRA-ET EX-91 2E  
DAM OF LOT H12

## H12

LUDDY HOLSTEINS  
TIM LUDWICK  
RD 3, BOX 159  
SUGAR GROVE, PA 16350  
814-757-8477  
CARRIETIM@VERIZON.NET

**Scientific SS Dusk-ET**  
135782006 Excellent-94 \*RC \*TV \*TL  
PTA -14M +28F +9P 90R 8/10  
PTA +1.5PL 3.05SCS -.8DPR 9%DCE  
PTA +2.89T +2.00UDC +2.48FLC 83R 8/10  
GTPI +1713G

**Pinehurst Lira-ET**  
129410410 Excellent-91 EEEVE 2E  
3-05 3x 365d 35230 3.8 1344 3.5 1233  
2-04 3x 359d 29390 3.8 1107 3.6 1062  
4-07 3x 305d 29240 4.0 1171 3.2 922  
Life: 1228d 100140 3.9 3903 3.5 3513

### FIVE #1 EMBRYOS

Not exportable

**Pursuit September Storm-ET**  
6820564C EX-CAN ST'02 GM 2/07 \*TV \*RC \*TL  
PTA -230M +34F -12P 99R 8/10  
PTA +1.98T +1.55UDC +2.73FLC GTPI +1494G

**Scientific Debutante Rae-ET**  
132416603 EX-92 EEEEE GMD DOM \*RC \*CV  
2-02 2x 365d 32930 4.4 1440 3.4 1132  
• All-American 4-Year-Old 2005

**Sunnylodge Linjet**  
5578386C EX-CAN ST'97 \*TV \*TL  
PTA -1659M -26F -37P 99R 8/10  
PTA +1.68T +1.55UDC +1.03FLC TPI +1285M

**Pinehurst Lost Love-ET**  
15249457 Excellent-91 EEEEE 2E GMD  
3-05 3x 365d 37690 3.9 1458 3.0 1144  
2-02 3x 365d 27900 3.7 1035 3.1 868

Full sister to Lost Love

**Pinehurst Lady Lisa-ET VG-88 EEEVV**  
3-05 3x 365d 39220 4.5 1755 2.8 1113

4th Dam

**Kegarway Lisa Canonero EX-94 3E GMD**  
8-01 3x 365d 27831 3.6 1014  
Life: 5 Lact 107313 3.5 3779  
• Res-All-American Produce of Dam 1986-87

5th Dam

**Kegarway June Leader Starlit EX-90**  
7-03 2x 365d 30893 3.6 1105

6th Dam

**Kegarway Treasure Leader EX-90**  
12-5 3x 343d 20040 4.1 829

**Conant-Acres-JY Broker-ET**  
389459C EX-CAN EXTRA'90 \*TV \*TL  
PTA -1589M -12F -35P 99R 8/10  
PTA +.05T -.42UDC -.90FLC GTPI +1123G

**Hepp-Haven Lisa of Pinehurst**  
10296854 Excellent-96 EEEE 3E  
5-07 2x 365d 27509 3.7 1010 3.2 873  
2-09 2x 365d 15959 3.8 604 3.2 518

• All-American Aged Cow 1986  
• Res All-American Aged Cow 1988  
• HM All-American 5 Yr Old Cow 1985

# Tricks-N-Treats Sale



**MBZ WEBSTER ELEGANCE-ET EX-91 2E**  
DAM OF LOT H13

## H13

ESKDALE DAIRY  
1100 CIRCLE DRIVE  
ESKDALE, UT 84728  
435-855-2474  
ESKDALEDAIRY@HOTMAIL.COM

### Maple-Downs-I G W Atwood-ET

8956379C Very Good-87 \*TV \*TL  
PTA +573M +55F +27P 79R 8/10  
PTA +1.8PL 2.82SCS -1.6DPR 7%DCE  
PTA +4.62T +3.25UDC +3.88FLC 74R 8/10  
GTPI +2067G

### MBZ Webster Elegance-ET

130849072 Excellent-91 EEEEE 2E GMD DOM  
3-10 2x 365d 36160 4.0 1448 3.4 1232  
7-03 2x 365d 35080 4.4 1536 3.5 1226  
2-04 2x 365d 30230 4.1 1253 3.4 1040  
Life: 1829d 138370 4.3 5917 3.6 4926

- Maternal sister to Mesland Duplex-ET
- Three sons in AI
- 7HO8885 - Emphasis - is a Titanic out of Elegance's EX-92 Durham maternal sister

## FIVE OR TEN #1 EMBRYOS

Exportable

- Winning bidder can take 5 or 10 embryos;
- Contending bidder has option to take remaining 5 if winner only takes 5 embryos

### Braedale Goldwyn

10705608C GP-CAN EXTRA'05 GM 8/08 \*TV \*TL  
PTA +424M +49F +28P 99R 8/10  
PTA +3.34T +2.53UDC +2.20FLC GTPI +2078G

### MD-Delight Durham Atlee-ET

131704103 Excellent-92 EEEEE DOM  
3-11 2x 365d 38290 5.5 2091 3.1 1177

- All-American Senior 3-Year-Old 2005

### Delta Webster-ET

159659261NLC GM 2.04 \*TV  
PTA +267M +46F +23P 99R 8/10  
PTA -1.20T -.96UDC +.02FLC GTPI +1220G

### Henkeseen Emerald-ET

17139448 Excellent-91 EEEEE 2E GMD DOM  
5-01 3x 365d 39400 3.2 1272 3.3 1299  
2-01 2x 365d 28940 3.8 1108 3.3 960  
Life: 1163d 106930 3.6 3834 3.3 3518

- Sons in AI
- Seven Excellent daughters

Maternal sisters to embryos

### EskDale Drake Emmaus-ET VG-87

3-03 2x 232d 21580 3.9 831 3.4 728 RIP

### EskDale Drake Emerald-ET VG-86

3-02 2x 267d 20610 4.2 865 3.2 667 RIP

### EskDale Lou Debonair-ET VG-86

Making over 33,000M in 305 days

4th Dam

### Henkeseen Mark Marci EX-94 3E GMD DOM

5-00 2x 365d 33430 3.5 1168 3.2 1060

Life: 2269d 171670 3.4 5888 3.1 5329

5th Dam

### Henkeseen Chairman Mandy VG-88 GMD DOM

4-06 2x 365d 33490 3.2 1066 2.9 960

Life: 1813d 133690 3.3 4353 2.9 3891

6th Dam

### Henkeseen Conductor Irish Miss VG-85

4-02 2x 323d 19260 3.7 722

### MJR Blackstar Emory-ET

2114601 Excellent-97 GM 2/00 \*TV \*TL

PTA +148M -27F -12P 99R 8/10

PTA +.90T +.65UDC +1.15FLC GTPI +1209G

### Henkeseen M Hillary-ET

14973207 Excellent-94 EEEEE 3E GMD DOM \*TV

8-00 2x 365d 42390 4.1 1720 3.6 1546

4-09 2x 365d 41550 4.3 1777 3.6 1492

Life: 2786d 202960 4.1 8255 3.8 7710

# Tricks-N-Treats Sale



**GREAT-HERITAGE BLISS EX-90**  
DAM OF LOT H14

## H14

JEFFREY WOODS  
WW ASSOCIATES  
222 N MIDVALE BLVD STE 4  
MADISON, WI 53705  
608-836-8702

### England-Ammon Million-ET

61547476 Excellent-92 \*TR \*TV \*TL \*TD  
PTA +719M +57F +20P 93R 8/10  
PTA +2.5PL 2.88SCS -0.5DPR 8%DCE  
PTA +2.30T +2.22UDC +1.52FLC 90R 8/10  
GTPI +1885G

### Great-Heritage Bliss

136022200 Excellent-90 EX-MS @ 5-02  
2-00 2x 365d 27440 3.6 993 3.2 884  
3-03 2x 334d 26070 3.3 860 3.2 832

## FIVE #1 EMBRYOS

Exportable

### Comestar Outside-ET

6026421C EX-CAN EXTRA'98 GM 1/08 \*TV \*TL  
PTA +244M +35F -5P 99R 8/10  
PTA +1.40T +.97UDC +1.76FLC GTPI +1741G

### Regancrest-HHF Maya-ET

60531869 Very Good-85 VG-MS @ 2-10  
2-04 3x 365d 24240 4.0 971 3.3 789

### Hartline Titanic-ET

123066734 EX-CAN GM 1/08 \*TV \*TL  
PTA +758M +22F +24P 99R 8/10  
PTA +1.63T +1.43UDC +2.46FLC GTPI +1463G

### Miss Bonnie-Elms Blessing

133503502 Very Good-88 EVEV @ 4-02  
3-04 2x 365d 32720 3.8 1228 3.0 993  
2-01 2x 365d 28790 3.6 1032 3.0 863

Sired by Fustead Emory Blitz-ET

### 3rd Dam

#### Bonnie-Elms Airliner Brandy EX-93 4E GMD DOM

6-02 2x 365d 40130 3.8 1542 2.8 1107  
Life: 2986d 272790 3.8 10394 2.9 7908

### 4th Dam

#### Bonnie-Elms Jess Barb VG-87 VG-MS

3-01 2x 365d 37740 3.1 1157 2.8 1072  
Life: 1477d 116160 3.4 3945 2.9 3354

### 5th Dam

#### Bonnie-Elms Foundation Barbara VG-87 VG-MS

7-07 2x 365d 27720 3.8 1058 3.2 886  
Life: 2921d 175170 3.7 6480 3.2 5597

### 6th Dam

#### Bonnie-Elms Starlite Barb-Twin VG-85 VG-MS

7-04 2x 365d 31780 3.3 1047 3.1 986  
Life: 3076d 202410 3.5 7046 3.2 5035

### 7th Dam

#### Bonnie-Elms Prince Tina VG-87

Life: 2435d 121910 3.3 4071

### 8th Dam

#### Bonnie-Elms Promis Katinka VG-87

Life: 2135d 133450 3.4 4580

### 9th Dam

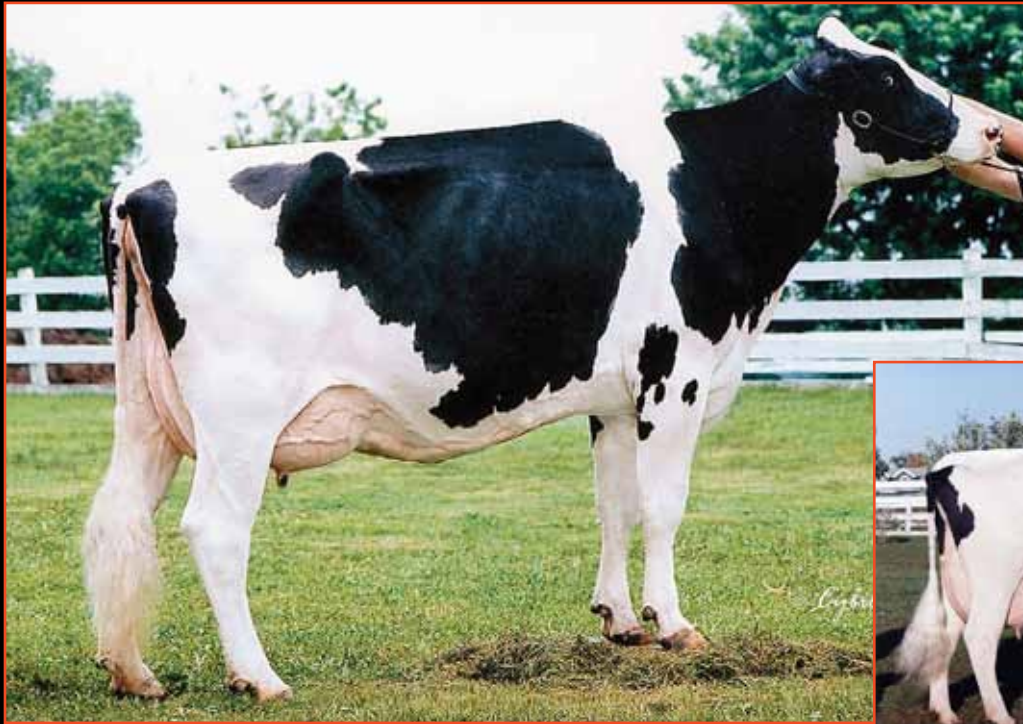
#### Bonnie Elms Royal Katinka EX-92 EEEV 5E

Life: 4255d 233300 3.4 7843

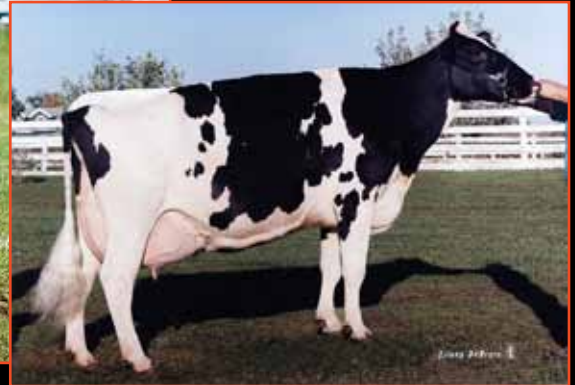
### 10th Dam

#### Bonnie Elms Jupiter Katinka VG-86

# Tricks-N-Treats Sale



**MAYERLANE-DK HIAWATHA-ET EX-90**  
2ND DAM OF LOT H15



**GOLDEN-OAKS MARK PRUDENCE EX-95**  
3RD DAM OF LOT H15

## H15

DAVID MYERS  
1089 EDEN RD  
ABILENE, KS 67410  
785-280-1200

### Jons-D Goldwyn Mark-ET

138475741  
PTA +1361M +77F +48P 42R 1/09  
PTA +2.8PL 2.79SCS -2.3DPR  
PTA +2.97T +2.35UDC +2.69FLC 40R 1/09  
PTPI +1922M

### A-L-H Morty Hooray-ET

135228751 Very Good-85 VG-MS @ 2-07  
2-03 2x 305d 22050 3.8 838 3.0 656

*Maternal sisters to Hooray*

**Mayerlane-DK Hyacinth EX-92 DOM**  
**Siemers Dunde Hilda 8669 EX-91**  
**A-L-H Durham Hot 8535 EX-90**

### DA-MAR-VUE-LM GMK HAZEL 988

64989220  
Born: September 13, 2008  
PTPI +1688 +933M +41F +30P +2.03T 8/10

Due: November 27, 2010 to Pine-Tree Martha Sholten  
(sexed semen)

Terms: Satisfaction guaranteed - see general terms

### Braedale Goldwyn

10705608C GP-CAN EXTRA'05 GM 8/08 \*TV \*TL  
PTA +424M +49F +28P 99R 8/10  
PTA +3.34T +2.53UDC +2.20FLC GTPI +2078G

### Velvet-View-KJ Style-ET

131348042 Very Good-88 DOM  
4-10 2x 305d 31420 3.9 1228 2.8 893  
Life: 1265d 101160 3.8 3813 3.1 3143

### Stouder Morty-ET

17349617 EX-CAN GM 2/06 \*TV \*TL  
PTA +1237M +17F +26P 99R 8/10  
PTA +1.70T +1.27UDC +1.40FLC GTPI +1372G

### Mayerlane-DK Hiawatha-ET

17352286 Excellent-90 EEEVE @ 5-03 DOM  
4-08 3x 365d 35280 4.3 1528 3.3 1177  
2-02 3x 365d 30340 3.7 1135 3.5 1062

### 3rd Dam

**Golden-Oaks Mark Prudence EX-95 GMD DOM**  
6-07 3x 365d 62981 3.8 2406 2.7 1706  
Life: 2321d 238711 3.8 9022 2.8 6759

### 4th Dam

**Ogden Hanover Sex Prudence EX-91 EEVE**  
3-02 2x 365d 23980 4.6 1108 3.7 876

• Four Excellent daughters

### 5th Dam

**Dreamstreet RORAE Pocohontis EX-93 2E GMD**  
5-10 2x 365d 28290 4.0 1132 3.3 944

### 6th Dam

**Sher-Mar Highmark Hiawatha EX-94 4E GMD**  
6-10 2x 365d 37470 5.0 1869

Life: 2496d 156568 4.0 6260

### 7th Dam

**Sher-Mar Lee Mitzi EX-91 4E GMD DOM**  
7-11 2x 365d 41390 4.2 1731

Life: 2683d 200451 3.6 7288

### 8th Dam

**Sher-Mar Mingo Mimi EX-90 2E**  
Life: 2738d 161990 3.9 6281

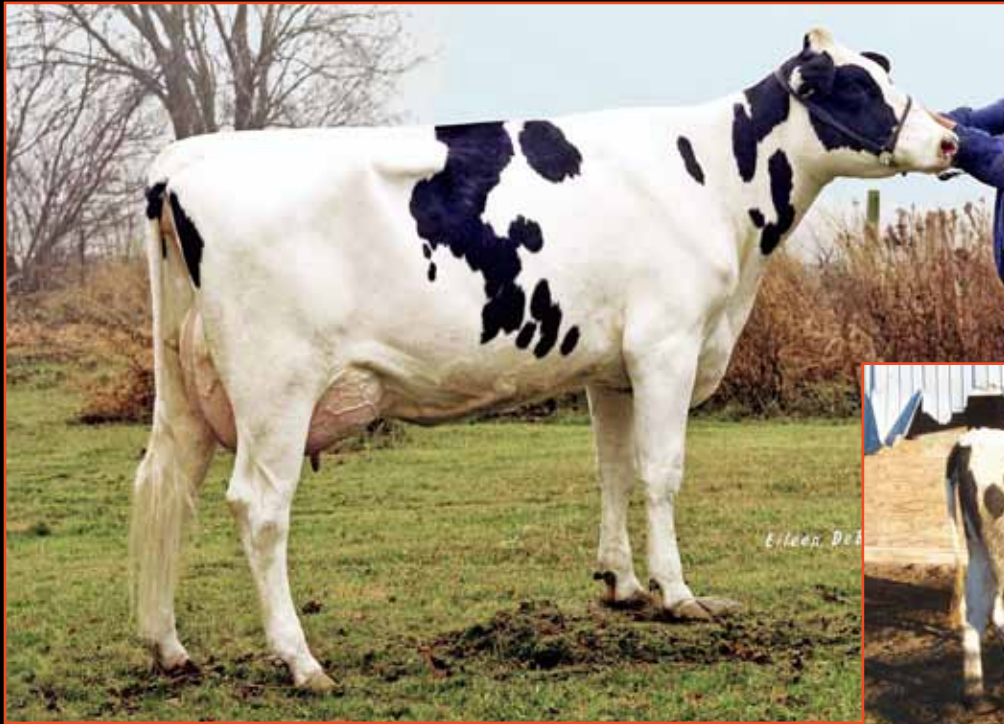
### 9th Dam

**Sher-Mar Misty Jo VG-85 VG-MS**  
3-06 2x 308d 15660 4.2 656

### 10th Dam

**Maroy Roburke Sue VG-86**  
5-09 2x 305d 23170 3.6 845

# Tricks-N-Treats Sale



**INTEGRITY LUCRE-ET VG-89**  
5TH DAM OF LOT H16



**INTEGRITY LISELLE-ET**  
DAM OF LOT H16

## H16

WILLIAM KARRELS  
1125 DIXIE ROAD  
PORT WASHINGTON, WI 53074  
262-707-3998  
WJKARRELS@MSN.COM

### Ri-Val-Re 2338 Niagra-ET

62067753 \*TR \*TV \*TL \*TD  
PTA +1613M +47F +54P 94R 8/10  
PTA +1.3PL 2.85SCS -1.5DPR 6%DCE  
PTA +2.00T +1.94UDC +.11FLC 90R 8/10  
GTPI +1913G

### Integrity Liselle-ET

139716665 98%RHA-I  
GTPI +1894 +373M +54F +22P +4.1PL 8/10

### THREE #1 EMBRYOS

Not exportable

• Same maternal family as Snowman!

### End-Road PVF Boliver-ET

123586443 Excellent-94 GM 8/08 \*TV \*TL  
PTA +870M +38F +34P 99R 8/10  
PTA +1.31T +1.36UDC -.17FLC GTPI +1852G

### Ri-Val-Re Jesther Nillie-ET

60403538 Excellent-91 2E DOM \*CV  
4-03 2x 365d 42500 3.4 1429 3.4 1428

### Roumare-ET

2217051448FRA 97%RHA-I \*TV \*TL  
PTA +172M +30F +34P 89R 8/10  
PTA +1.58T +1.48UDC +1.26FLC TPI +1812M

### Integrity Zesty Lisa

138106522 Good Plus-81 @ 2-11  
CTPI +1755 +511M +53F +29P +2.5PL 8/10  
2-00 2x 316d 21090 4.6 967 3.4 709

### 4th Dam

#### Integrity Outside Layne-ET EX-90 VEEVE

5-09 2x 357d 29180 4.2 1222 3.1 900  
Life: 1489d 105220 4.3 4530 3.1 3247

### 5th Dam

#### Integrity Lucre-ET VG-89 VEVVE \*TL

4-04 2x 305d 32170 3.4 1089 2.9 935  
Life: 1367d 108470 3.7 4021 3.1 3373

### 6th Dam

#### Ever-Green-View Latex-ET VG-88 GMD DOM \*BL

3-02 2x 305d 28530 3.8 1098 3.0 868

### 7th Dam

#### Ever-Green-View Le Grant-ET EX-90 2E GMD

4-00 3x 365d 50280 3.7 1874 3.1 1576  
Life: 915d 102770 3.8 3856 3.2 3296

### 8th Dam

#### Ever-Green-View Leisure EX-91 2E GMD DOM

7-07 3x 365d 48190 3.7 1788 3.0 1461  
Life: 1411d 144420 3.8 5477 3.1 4497

### Valley-Drive Zesty-ET

132465661 GM 8/08 \*TV \*TL  
PTA +783M +19F +33P 99R 8/10  
PTA +1.24T +.53UDC +1.56FLC GTPI +1720G

### Integrity O Lightening

136145635 Very Good-88 VVEWV @ 5-06  
3-11 2x 365d 30320 4.1 1237 3.5 1064

• Son in AI

# Tricks-N-Treats Sale



**CARROUSEL SKY MANATEA-ET VG-88**  
DAM OF LOT H17



**C LAUDUC BROKER MANDY EX-96 4E**  
2ND DAM OF LOT H17

## H17

LUDDY HOLSTEINS  
TIM LUDWICK  
RD 3, BOX 159  
SUGAR GROVE, PA 16350  
814-757-8477  
CARRIETIM@VERIZON.NET

**Crackholm Fever-ET**  
103631566C EX-91-CAN \*TV \*TL  
PTA +215M +36F +6P 89R 8/10  
PTA +1.8PL 2.83SCS -.7DPR 7%DCE  
PTA +2.59T +1.85UDC +1.06FLC 82R 8/10  
GTPI +1740G

**Carrousel Sky Manatea-ET**  
132879154 Very Good-88 EX-MS @ 6-00  
3-09 2x 305d 21870 4.3 933 3.5 768  
2-08 2x 330d 21470 3.9 847 3.5 754  
5-02 2x 305d 18720 4.7 872 3.6 666

Full sister to Sky Manatea  
**Carrousel Sky Maria-ET EX-92 2E**  
2-02 2x 365d 24720 4.2 1039 3.5 873

## FIVE #1 EMBRYOS

Not exportable

**Braedale Goldwyn**  
10705608C GP-CAN EXTRA'05 GM 8/08 \*TV \*TL  
PTA +424M +49F +28P 99R 8/10  
PTA +3.34T +2.53UDC +2.20FLC GTPI +2078G

**Crackholm Emory Fashion**  
100385034C EX-92-CAN 4\*  
4-09 2x 365d 36358 3.8 1387 2.9 1071  
Life: 3 Lacs 122269 4.0 4941 3.1 3821

**Donnandale Skychief-ET**  
391661C EX-CAN GM 2/01 \*TL  
PTA -338M -13F -12P 99R 8/10  
PTA +1.07T +.83UDC -.96FLC TPI +1359M

**C Lauduc Broker Mandy**  
15638060 Excellent-96 EEEEE 4E 5\*  
10-0 2x 365d 33740 4.8 1618 3.2 1077  
5-09 2x 365d 27580 4.7 1301 3.4 935  
2-04 2x 365d 26600 5.1 1352 3.5 919  
Life: 2268d 171666 4.8 8281 3.4 5837

## MANDY!

- All-American Aged Cow 2000
- Res All-American 5 Year-Old Cow 1998
- Res All-Canadian 5-Year-Old Cow 1998
- Res Gr Champion Royal Winter Fair 1998
- All-Canadian Sr 3-Year-Old Cow 1996
- Res All-American Sr 3-Year-Old Cow 1996
- Gr Champion Royal Winter Fair 1996
- All-American Sr 2-Year-Old Cow 1995

## 4th Dam

**Lauduc Starbright Marise VG-87-CAN 8\***  
7-00 2x 348d 24941 4.9 1228 3.8 939  
Life: 2237d 143270 4.9 6966 3.7 5320

## 5th Dam

**Lauduc Admiral Manon VG-86-CAN 6\***  
6-03 2x 325d 25115 4.2 1047  
Life: 7 Lact 145254 4.3 6215

## Conant-Acres-JY Broker-ET

389459C EX-CAN EXTRA'90 \*TV \*TL  
PTA -1589M -12F -35P 99R 8/10  
PTA +.05T -.42UDC -.90FLC GTPI +1123G

## Lauduc Starbuck Marisa

4252325C EX-2E-CAN 7\*  
7-00 2x 362d 31030 4.9 1526 3.5 1076  
8-03 2x 305d 30349 4.7 1420 3.4 1034  
Life: 2497d 171712 4.9 8338 3.6 6098

- Grand Champion Huntingdon 1991

# Tricks-N-Treats Sale



**PRK ASTRO AMANDA-ET VG-86**  
DAM OF LOT H18



**SHOREMAR S ALICIA-ET EX-97 3E**  
3RD DAM OF LOT H18

## H18

EUGENE GEORGE & BILL WOODS  
918 E 1500 ROAD  
BALDWIN CITY, KS 66006  
785-843-9466  
BCLE06@SBGLOBAL.NET

### Maple-Downs-I G W Atwood-ET

8956379C Very Good-87 \*TV \*TL  
PTA +573M +55F +27P 79R 8/10  
PTA +1.8PL 2.82SCS -1.6DPR 7%DCE  
PTA +4.62T +3.25UDC +3.88FLC 74R 8/10  
GTPI +2067G

### PRK Astro Amanda-ET

135001033 Very Good-86 VVVVV @ 2-06  
2-04 2x 365d 23760 3.3 786 3.4 812  
4-11 2x 267d 19730 3.7 732 3.3 650

*Maternal sisters to Astro Amanda*

**Ms Ma-Tom-Ba Dundee Anna-ET VG-87 VG-MS**

2-09 2x 365d 34110 3.8 1293 3.3 1128

**PRK Cousteau Angel VG-86**

## FIVE #1 EMBRYOS

Not exportable

### Braedale Goldwyn

10705608C GP-CAN EXTRA'05 GM 8/08 \*TV \*TL  
PTA +424M +49F +28P 99R 8/10

PTA +3.34T +2.53UDC +2.20FLC GTPI +2078G

### MD-Delight Durham Atlee-ET

131704103 Excellent-92 EEEEE DOM

3-11 2x 365d 38290 5.5 2091 3.1 1177

• *All-American Senior 3-Year-Old 2005*

### Oseeana Astronomical-ET

129355919 EX-95-CAN ST'04 \*TV \*TL

PTA -885M -54F -24P 99R 8/10

PTA +1.58T +.11UDC +1.11FLC GTPI +940G

### BKB Leduc Ashley-ET

132622079 Very Good-87 VEVVV @ 2-04 \*TL

2-02 2x 305d 25220 4.3 1090 3.2 802

3-10 2x 286d 20650 3.5 726 3.4 704

*Full sister to Leduc Ashley*

**BKB Leduc Audrey-ET EX-92**

*Maternal sisters to Leduc Ashley*

**BKB Abby-ET EX-94 DOM**

**BKB Cousteau Anne EX-92**

*Full sister to S Alicia*

**Ms Kingstead Chief Adeen-ET EX-94 2E DOM \*BL**

3-05 2x 310d 30180 4.0 1209 3.6 1077

Life: 1382d 100760 4.0 4010 3.6 3649

• *Nom All-American Jr 3-Year-Old 2000*

• *Nom All-American 4-Year-Old 2001*

• *Member All-American Produce of Dam 2000*

• *All-Canadian 4-Yr-Old Cow 1999*

*4th Dam*

**C Aitkenbrae Starbuck Ada EX-94 2E DOM \*BL**

2-05 2x 362d 25000 3.6 908 3.4 845

Life: 6 Lact 137732 3.4 4749 3.4 4647

• *All-American Produce of Dam 2000, 2001*

• *All-American 3-Year-Old 1990*

### Lystel Leduc-ET

6193092C EX-CAN ST'99 \*TV \*TL

PTA -1126M -6F -24P 99R 8/10

PTA +.82T +.43UDC -.36FLC GTPI +964G

### Shoremar S Alicia-ET

6434408C Excellent-97 EEEEE 3E 5\* \*BL

6-10 2x 365d 35760 4.3 1544 3.4 1215

5-02 2x 365d 33570 4.2 1414 3.5 1177

Life: 5 Lact 163892 4.2 6819 3.3 5485

• *Res All-American Aged Cow 2004*

• *All-American Aged Cow 2003*

# Tricks-N-Treats Sale



**REGANCREST SHOTTLE ILSA-ET VG-87**  
DAM OF LOT H19



**SNOW-N DENISES DELLIA EX-95 2E**  
4TH DAM OF LOT H19

## H19

NEIL MCDONAH  
W21205 SOUTH STREET  
TREMPEALEAU, WI 54661  
608-385-1592  
NMCDONAH@HOTMAIL.COM

### Schillview Oman Gerard-ET

52805723 \*TV \*TL  
PTA +1358M +45F +57P 93R 8/10  
PTA +2.0PL 3.09SCS -0.1DPR 7%DCE  
PTA +2.04T +2.50UDC +1.41FLC 91R 8/10  
GTPI +2017G

### Regancrest Shottle Ilsa-ET

62496821 Very Good-87 VG-MS @ 3-02  
GTPI +1885 +2.85T +2.38UDC +1.67FLC 8/10  
4-06 2x 86d 8440 4.3 364 3.2 270 RIP  
• *Mat sis to AltaIota +2135 #5 TPI bull 8/10*  
• *Same family as Dolman!*  
• *Potential EX cow*  
• *Embryos exported worldwide*  
• *Onward son being sampled in France*  
• *Onward daughter +189 above PA*  
• *1 of 5 VG full sisters; 2 are in Holland*

## SEVEN #1 EMBRYOS

Exportable

### O-Bee Manfred Justice-ET

122358313 Excellent-94 GM 8/08 \*TR \*TV \*TL \*TD  
PTA +741M +66F +47P 99R 8/10  
PTA +.16T -.28UDC +1.05FLC GTPI +2089G

### Schillview Marsh Glash-ET

50546487 Very Good-89 DOM \*CV \*TL  
2-02 2x 365d 29790 4.7 1386 3.5 1029  
5-07 2x 365d 25830 4.7 1221 3.4 875

### Picston Shottle-ET

GBR 598172 EX-95-GBR GM 8/08 \*TV \*TL  
PTA +1307M +66F +37P 99R 8/10  
PTA +3.11T +2.23UDC +2.16FLC GTPI +2047G

### Regancrest Ito Ilsa

60870571 Very Good-86 VG-MS @ 2-09  
2-00 2x 365d 31510 3.6 1143 3.5 1110

### 4th Dam

**Snow-N Denises Dellia EX-95 2E GMD DOM**  
7-06 2x 365d 35610 4.0 1431 3.1 1103  
Life: 2558d 180240 3.9 7108 3.4 6065

### 5th Dam

**Snow-N Dorys Denise EX-90 2E GMD DOM**  
5-09 2x 365d 33350 2.8 1256 3.1 1038  
Life: 1604d 114010 3.6 4153 3.2 3649

### Barbee-M Juror Ito-ET

2287161 Excellent-90 GM 8/04 \*TV \*TL  
PTA +350M +5F +2P 99R 8/10  
PTA +.72T +1.00UDC -.43FLC GTPI +1587G

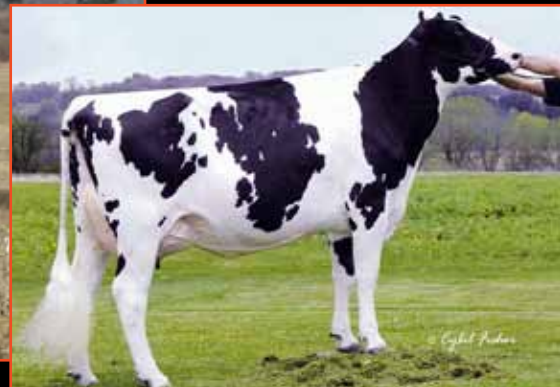
### Regancrest Emory Dorissa-ET

15967188 Very Good-86 VG-MS @ 7-10 GMD DOM  
6-05 2x 365d 40890 3.8 1545 3.4 1390  
8-05 2x 365d 37340 3.7 1400 3.3 1247  
2-04 2x 365d 30130 4.0 1211 3.5 1066  
Life: 1826d 158030 3.9 6129 3.6 5611

# Tricks-N-Treats Sale



**LUCK-E GOLD ARROW**  
DAM OF LOT H20



**LUCK-E BLITZ AUSTRALIA-ET VG-87**  
2ND DAM OF LOT H20

## H20

NEIL MCDONAH  
W21205 SOUTH STREET  
TREMPEALEAU, WI 54661  
608-385-1592  
NMCDONAH@HOTMAIL.COM

### Regancrest Altalota-ET

61898306 \*TV \*TL  
PTA +815M +66F +42P 92R 8/10  
PTA +3.4PL 2.80SCS +1.3DPR 7%DCE  
PTA +2.27T +2.01UDC +1.22FLC 90R 8/10  
GTPI +2135G

### Luck-E Gold Arrow-ET

62637166 Very Good-86 VG-MS @ 2-09  
CTPI +1971 +2.80T +2.75UDC +2.33FLC 8/10  
2-01 2x 305d 28170 3.9 1102 3.4 966

## SEVEN #1 EMBRYOS

Exportable

### O-Bee Manfred Justice-ET

122358313 Excellent-94 GM 8/08 \*TR \*TV \*TL \*TD  
PTA +741M +66F +47P 99R 8/10  
PTA +.16T -.28UDC +1.05FLC GTPI +2089G

### Regancrest Ito Isa

60870571 Very Good-86 VG-MS @ 2-09  
2-00 2x 365d 31510 3.6 1143 3.5 1110

### Braedale Goldwyn

10705608C GP-CAN EXTRA'05 GM 8/08 \*TV \*TL  
PTA +424M +49F +28P 99R 8/10  
PTA +3.34T +2.53UDC +2.20FLC GTPI +2078G

### Luck-E Blitz Australia-ET

134315038 Very Good-87 VG-MS GMD DOM \*TV \*TL  
2-02 2x 365d 37990 4.0 1528 3.0 1132

*Full sister to Australia*

### Luck-E Blitz Alabama-ET EX-90 2E

4-06 3x 365d 40350 3.7 1498 3.1 1243

*4th Dam*

### Hart-Lyn Starbuck Ashley EX-94 2E GMD DOM

6-06 2x 365d 35720 4.2 1504 3.4 1200  
Life: 1753d 124040 4.0 4994 3.4 4239

*5th Dam*

### Kachina Valiant Act-ET VG-86 VG-MS

7-05 2x 365d 23450 4.4 1041 3.3 764  
Life: 2103d 110050 4.6 5037 3.4 3742

*6th Dam*

### Dodeb Matt Actress EX-93 EEEE 3E

3-00 3x 305d 27110 4.2 1131  
Life: 2348d 141870 4.3 6058

*7th Dam*

### Lamkinland B Matt Actress VG-85 VG-MS

5-04 3x 305d 20780 3.9 820

### Fustead Emory Blitz-ET

17013604 Excellent-95 GM 2/05 \*TV \*TL  
PTA +1921M +15F +8P 99R 8/10  
PTA +1.42T +1.17UDC +.89FLC GTPI +1423G

### Luck-E Skychief Arizona-ET

15954239 Excellent-90 EX-MS GMD DOM  
5-01 2x 365d 56280 5.1 2872 3.3 1855  
2nd Illinois Fat & 2nd Illinois Protein  
3-02 2x 365d 33360 5.4 1799 3.7 1226  
Life: 1301d 125490 5.2 6512 3.6 4464

# Tricks-N-Treats Sale



**SPEEK-NJ SHOTTLE ALDI-ET VG-85**  
DAM OF LOT H21

## H21

NEIL MCDONAH  
W21205 SOUTH STREET  
TREMPEALEAU, WI 54661  
608-385-1592  
NMCDONAH@HOTMAIL.COM

**De-Su Observer-ET** - OR -  
65917481 \*TR \*TV \*TL \*TD  
PTA +1194M +54F +39P 77R 8/10  
PTA +7.6PL 2.65SCS +1.6DPR 4%DCE  
PTA +2.62T +2.80UDC +.99FLC 71R 8/10  
GTPI +2359G

**Speek-NJ Shottle Aldi-ET**  
64720996 Very Good-85 VG-MS @ 2-05 98%RHA-I  
GTPI +1903 +1066M +53F +23P +2.56T 8/10

### SEVEN #1 OBSERVER EMBRYOS

### SIX #1 ALTAIOTA EMBRYOS

Exportable

- *Winning bidder gets first choice and privilege to take both sets of embryos*
- *Contending bidder has the option to take the second choice if winner takes only one set*

### Regancrest Altalota-ET

61898306 \*TV \*TL  
PTA +815M +66F +42P 92R 8/10  
PTA +3.4PL 2.80SCS +1.3DPR 7%DCE  
PTA +2.27T +2.01UDC +1.22FLC 90R 8/10  
GTPI +2135G

### Braedale Goldwyn

10705608C GP-CAN EXTRA'05 GM 8/08 \*TV \*TL  
PTA +424M +49F +28P 99R 8/10  
PTA +3.34T +2.53UDC +2.20FLC GTPI +2078G

### Morningview Capri Aldi-ET

133121179 Excellent-90 VVEVE @ 4-07 97%RHA-I  
4-06 2x 365d 34130 3.6 1216 3.0 1031  
3-04 2x 365d 33900 3.8 1287 3.1 1055  
2-02 2x 360d 27390 3.9 1057 3.1 853  
Life: 1148d 104570 3.7 3917 3.1 3264

#### 4th Dam

**Morningview Converse Judy** EX-93 GMD DOM  
4-05 2x 365d 38100 4.1 1565 3.3 1269

#### • Sons in AI

#### 5th Dam

**Morningview Aerostar Jix-ET** VG-87 EX-MS  
5-06 2x 340d 32040 3.9 1249 3.4 1089  
Life: 1400d 110030 3.7 4110 3.5 3880

#### 6th Dam

**Walnut-Knoll Judy-ET** VG-87 VEVV GMD DOM  
4-08 2x 357d 37210 4.0 1480 3.0 1116

#### 7th Dam

**Walnut-Knoll RORAE Jenny** EX-91 2E GMD DOM  
7-04 2x 365d 29830 4.1 1210 2.8 828  
Life: 2581d 156590 4.0 6248

#### 8th Dam

**Lynnberry Gem** VG-89 EEEV  
6-02 2x 365d 27770 4.1 1143

### Riglio Juror Capri-ET

3805002265ITA GM 8/05 95%RHA-I \*TV \*TL  
PTA -345M +14F -12P 99R 8/10  
PTA +1.14T +.92UDC +.71FLC GTPI +1247G

### Morningview Form Ashley-ET

124786734 Very Good-88 EX-MS GMD DOM  
3-11 2x 365d 36030 3.6 1313 3.1 1111  
5-07 2x 341d 30540 3.5 1054 4.1 932  
Life: 1577d 132710 3.6 4774 3.1 4092

# Tricks-N-Treats Sale



**CARROUSEL GOLDW DIVA-ET VG-86**  
DAM OF LOT H22



**SNOW-N DENISES DELLIA EX-95 2E**  
3RD DAM OF LOT H22

## H22

CASTLEHOLM HOLSTEINS  
S75 COUNTY ROAD H  
MONDOVI, WI 54755  
612-418-2484  
DAN@GGRESOURCES.COM

### Picston Shottle-ET

GBR 598172 EX-95-GBR GM 8/08 \*TV \*TL  
PTA +1307M +66F +37P 99R 8/10  
PTA +3.2PL 2.70SCS -2.3DPR 8%DCE  
PTA +3.11T +2.23UDC +2.16FLC 99R 8/10  
GTPI +2047G

### Carrousel Goldw Diva-ET

137367641 Very Good-86 VG-MS @ 3-09  
2-07 2x 365d 32390 4.1 1339 3.1 1011

*Maternal sister to Diva*

### Carrousel Lee Destiny VG-88

2-02 2x 349d 22540 3.5 795 3.1 694

## SEVEN #1 EMBRYOS

Not exportable

### Carol Prelude Mfoto-ET

6001001962ITA GM 1/08 \*TV \*TL  
PTA +648M +28F +10P 99R 8/10  
PTA +.32T -.01UDC +.67FLC GTPI +1699G

### Condon Aero Sharon

5373153C EX-91-GBR 60\*  
5-07 2x 305d 36230 4.3 1561 3.3 1179  
4-00 2x 305d 25286 4.3 1508 3.4 1202

### Braedale Goldwyn

10705608C GP-CAN EXTRA'05 GM 8/08 \*TV \*TL  
PTA +424M +49F +28P 99R 8/10  
PTA +3.34T +2.53UDC +2.20FLC GTPI +2078G

### Regancrest Starbk Denyse-ET

207184406 Excellent-92 EEEEE 2E  
3-06 2x 365d 24940 4.5 1117 3.5 884  
6-08 2x 327d 22970 4.0 916 3.4 783  
2-04 2x 351d 20770 4.2 875 3.4 710  
• All-Illinois Sr 2-Yr-Old Cow 2002  
• 8th Sr 3-Yr-Old International Show 2003

*Full sister to Goldw Diva*

### Carrousel Goldw Divine-ET EX-92

• Nom All-Canadian Int Yearling 2007  
• Sold for \$100,000 in ADI Global  
1st Edition Sale 2007

*4th Dam*

### Snow-N Dorys Denise EX-90 EEVE 2E GMD DOM

5-09 2x 365d 33350 3.8 1256 2.9 975  
Life: 1604d 114010 3.6 4153 3.0 3432

### Hanoverhill Starbuck

352790C EX-CAN EXTRA'85 \*TV \*TL  
PTA -1672M -32F -36P 99R 8/10  
PTA -.14T -.98UDC +.87FLC GTPI +934G

### Snow-N Denises Dellia

12895802 Excellent-95 EEEEE 2E GMD DOM \*TV \*TL  
7-06 2x 365d 35610 4.0 1431 3.1 1103  
6-00 2x 365d 35230 4.0 1425 3.2 1116  
Life: 2558d 180240 3.9 7108 3.4 6065  
• Gr Ch & Best Udder Spring Nat/WI 1991  
• Res Ch & Best Udder Spring Nat/WI 1993

# Tricks-N-Treats Sale



**BUDJON-JK CHAMP ELIANNA-ET VG-88**  
DAM OF LOT H23



**BUDJON-JK LINJET EILEEN-ET EX-96 3E**  
2ND DAM OF LOT H23

## H23

CASTLEHOLM HOLSTEINS  
S75 COUNTY ROAD H  
MONDOVI, WI 54755  
612-418-2484  
DAN@GGRESOURCES.COM

### Picston Shottle-ET

GBR 598172 EX-95-GBR GM 8/08 \*TV \*TL  
PTA +1307M +66F +37P 99R 8/10  
PTA +3.2PL 2.70SCS -2.3DPR 8%DCE  
PTA +3.11T +2.23UDC +2.16FLC 99R 8/10  
GTPI +2047G

### Budjon-JK Champ Elianna-ET

136614580 Very Good-88 EVVEV @ 4-09  
3-04 3x 365d 45400 3.9 1764 3.0 1350  
• Sold for \$50,000 in 2005 World Classic Sale

*Maternal sisters to Champ Elianna*

### Budjon-JK Storm Emily-ET EX-92 EEEEE

4-08 2x 365d 41090 3.7 1514 3.2 1329  
• Reserve All-American Sr 2-Year-Old 2005

### Budjon-JK Stormatic East-ET EX-91 EEEVE

2-02 2x 365d 34470 4.1 1413 3.1 1066

## SEVEN #1 EMBRYOS

Not exportable

### Carol Prelude Mtoto-ET

6001001962ITA GM 1/08 \*TV \*TL  
PTA +648M +28F +10P 99R 8/10  
PTA +.32T -.01UDC +.67FLC GTPI +1699G

### Condon Aero Sharon

5373153C EX-91-GBR 60\*  
5-07 2x 305d 36230 4.3 1561 3.3 1179  
4-00 2x 305d 25286 4.3 1508 3.4 1202

### Calbrett-I H H Champion-ET

6961162C EX-CAN GM 2/07 \*TV \*TL  
PTA +1023M +20F +22P 99R 8/10  
PTA +1.28T +.31UDC -.10FLC GTPI +1531G

### Budjon-JK Linjet Eileen-ET

125791216 Excellent-96 EEEEE 3E GMD DOM  
5-06 2x 365d 44703 3.7 1647 3.1 1381  
3-07 2x 365d 40300 3.5 1428 3.3 1342  
Life: 1481d 139720 3.6 5063 3.5 4821

• Reserve All-American Aged Cow 2005

• All-American 5-Year-Old Cow 2004

### 4th Dam

#### Krull Starbuck Excellency EX-90 GMD DOM

3-03 2x 365d 27140 3.5 937 3.4 930

### 5th Dam

#### Krull TT Excellency EX-90 VEEE DOM

3-02 2x 363d 24319 3.5 862 3.4 829

Life: 1733d 109780 3.7 4077 3.3 3605

### 6th Dam

#### Krull Boot Mark Excellency EX-92 2E GMD

6-06 2x 365d 27410 3.8 1040 3.1 868

Life: 3026d 201440 3.5 7105 3.0 4634

### 7th Dam

#### Krull Kingstead Excellency EX-92 4E GMD

12-4 2x 323d 21920 3.5 772

Life: 3364d 179790 3.6 6436

### Sunnylodge Linjet

5578386C EX-CAN ST'97 \*TV \*TL

PTA -1659M -26F -37P 99R 8/10

PTA +1.68T +1.55UDC +1.03FLC TPI +1285M

### Krull Broker Elegance

15395294 Excellent-96 EEEEE 3E GMD DOM \*TL

5-07 2x 365d 40950 3.7 1522 3.3 1350

Life: 2356d 183710 3.7 6878 3.4 6267

• HM All-American Aged Cow 1999

• HM All-Canadian Mature Cow 1999

# Tricks-N-Treats Sale



**DAMARTINI ALLIE ADRIANNA-ET GP-84**  
DAM OF LOT H24



**TRI-DAY ASHLYN-ET EX-96 2E**  
4TH DAM OF LOT H24

## H24

DAMARTINI HOLSTEINS  
W14125 INGEBRETSON RD  
WISCONSIN DELLS, WI 53965  
608-254-8102  
CHRISDA\_11@HOTMAIL.COM

### Mutally Agreeable Sire

**Damartini Allie Adrianna-ET**  
138316611 Good Plus-84 @ 3-05  
2-05 2x 305d 17140 3.7 635 3.4 585

- Maternal sister
- Damartini Allies Alyssa**
- Red Destry son at St. Jacobs

### FOUR #1 EMBRYOS

**KHW Kite Advent-Red-ET**  
133002953 Excellent-94 \*TV \*TL \*TD  
PTA -1252M -19F -28P 99R 8/10  
PTA +2.39T +2.16UDC +1.60FLC GTPI +1428G

**W-M Ariannas Allie-ET**  
62099433 Very Good-87 VG-MS @ 2-11  
3-09 2x 305d 23310 3.0 698 3.1 725  
2-04 2x 305d 20490 3.7 758 3.1 643

### Ashlyn!

- All-American 4-Year-Old Cow 2001
- All Canadian 4-Year-Old Cow 2001
- All-American Sr 3-Year-Old Cow 2000
- Res All Canadian Sr 3-Year-Old Cow 2000

### 4th Dam

**Tri-Day Ashlyn-ET EX-96 EEEEE 2E GMD DOM**  
4-09 2x 365d 43090 4.8 2079 3.5 1503  
Life: 1374d 144770 4.6 6665 3.5 5135

### 5th Dam

**Bendy-Brook Odyssey Favorite EX-92 2E DOM**  
6-01 2x 337d 22670 3.4 770 3.1 706

- Res All-American Produce of Dam 2001
- Nom Jr All-American Aged Cow 1995

### 6th Dam

**Bendy-Brook Star Fonda VG-86 VG-MS**  
3-11 2x 290d 23390 3.5 826 3.1 724

### Ladino Park Talent-Imp-ET

AUS 930377 Excellent-90 ST'03 \*RC \*TV \*TL  
PTA -211M -29F +5P 99R 8/10  
PTA +2.04T +2.30UDC +.85FLC GTPI +1435G

### Oseeana Ashlyns Arianna-ET

60681482 Excellent-90 EEEVE @ 4-11  
2-03 2x 365d 29807 3.8 1129 3.3 981  
4-09 2x 227d 20300 4.4 888 3.2 656

# Tricks-N-Treats Sale



**SUNNYFIELD J LO EX-92-3E-CAN**  
2ND DAM OF LOT H25

## H25

GERALD YODER  
1107 THUNDERING SPRINGS RD  
DUBLIN, GA 31027  
478-609-0562

### Maple-Downs-I G W Atwood-ET

8956379C Very Good-87 \*TV \*TL  
PTA +573M +55F +27P 79R 8/10  
PTA +1.8PL 2.82SCS -1.6DPR 7%DCE  
PTA +4.62T +3.25UDC +3.88FLC 74R 8/10  
GTPI +2067G

### Crackholm Dundee Shakira-ET

103631563C Very Good-87 EVVV @ 3-01  
2-02 3x 305d 22690 3.3 756 3.1 705

## SIX #1 EMBRYOS

Exportable but not EU qualified

### Braedale Goldwyn

10705608C GP-CAN EXTRA'05 GM 8/08 \*TV \*TL  
PTA +424M +49F +28P 99R 8/10  
PTA +3.34T +2.53UDC +2.20FLC GTPI +2078G

### MD-Delight Durham Atlee-ET

131704103 Excellent-92 EEEEE DOM  
3-11 2x 365d 38290 5.5 2091 3.1 1177  
• All-American Senior 3-Year-Old 2005

### Regancrest Dundee-ET

127640114 Excellent-95 \*TV \*TL  
PTA -489M -25F -10P 99R 8/10  
PTA +2.04T +2.12UDC +.84FLC GTPI +1268G

### Sunnyfield J Lo

8350296C EX-92-3E-CAN 1\*  
6-07 2x 365d 28477 4.1 1177 3.1 888  
• Nom All-Canadian Sr 2-Year-Old 2004  
• Res All-Quebec Senior 2-Year-Old 2004  
• 2nd 4-Year-Old, Richmond 2006

### 4th Dam

#### Calbrett Starbuck Kim VG-85-4YR-CAN 3\*

5-05 2x 307d 26036 3.8 999 3.1 820

### 5th Dam

#### Calbrett Enhancer Kandi VG-86-CAN

3-01 2x 365d 27811 3.9 1087 3.3 904

### 6th Dam

#### Beaucoise Tempo Kimo EX-3E-CAN 4\*

6-00 3x 365d 25040 3.6 906 3.1 785

Life: 8 Lacs 175455 3.7 6565 3.2 4295

### 7th Dam

#### Chacock Elevation Kim VG-CAN 12\*

7-06 2x 365d 24932 4.1 1019

Life: 6 Lacs 119941 4.1 4872

### Silky Gibson-ET

6215479C EX-96-CAN ST'99 \*TV \*TL  
PTA -966M +10F -19P 99R 8/10  
PTA +1.48T +1.06UDC +.16FLC GTPI +1294G

### Sunnyfield Tyra

6848798C EX-CAN 2\*  
7-06 2x 336d 32604 3.8 1243 3.1 1014  
6-03 2x 341d 30900 3.8 1162 3.3 1023  
Life: 6 Lacs 168808 3.7 6305 3.3 5487

# Tricks-N-Treats Sale

## H26

GERALD YODER  
1107 THUNDERING SPRINGS RD  
DUBLIN, GA 31027  
478-609-0562

### Royland Socra Robust-ET

64966739 \*TV \*TL \*TD \*TR  
PTA +1405M +81F +48P 76R 8/10  
PTA +6.7PL 2.83SCS -0.1DPR 6%DCE  
PTA +2.24T +2.04UDC +2.35FLC 71R 8/10  
GTPI +2317G

### Bo-Irish Pontiac Loofa-ET

139025864 Very Good-85 VG-MS @ 2-03 98%RHA

## SIX #1 EMBRYOS

Exportable but not EU qualified

### Velvet-View-KJ Socrates-ET

133126053 Excellent-94 GM 8/09 \*TR \*TV \*TL \*TD  
PTA +940M +51F +16P 96R 8/10  
PTA +1.44T +.45UDC +1.22FLC GTPI +1766G

### Seagull-Bay Oman Mirror-ET

62115945 Very Good-86 VG-MS DOM  
3-00 2x 365d 36430 4.4 1606 3.6 1304  
1-11 2x 340d 29320 4.2 1230 3.5 1026

### Klumbs Durham Pontiac

131348369 Excellent-92 \*TR \*TV \*TL \*TD  
PTA +37M -37F -17P 99R 8/10  
PTA +2.05T +2.70UDC +1.89FLC GTPI +1560G

### Den-Joy Outside Lucy-TW

60949702 Excellent-91 EEEVE 2E  
5-08 3x 365d 53050 4.3 2299 2.8 1500  
4-05 3x 365d 52680 4.4 2329 3.0 1585  
3rd National Fat & 3rd WI Fat  
Life: 838d 112870 4.3 4863 3.0 3339

### 4th Dam

Den-Joy Hawk Lesley EX-90 DOM 87%RHA  
5-08 2x 304d 31710 3.9 1222 3.2 1013

### Comestar Outside-ET

6026421C EX-CAN EXTRA'98 GM 1/08 \*TV \*TL  
PTA +244M +35F -5P 99R 8/10  
PTA +1.40T +.97UDC +1.76FLC GTPI +1741G

### Den-Joy Roebuck Les

17176381 Very Good-87 VEVVV @ 6-05 93%RHA  
3-05 3x 365d 41140 3.5 1440 2.9 1195  
5-11 3x 305d 34210 3.0 1020 2.9 978  
4-11 3x 292d 33560 3.6 1218 2.9 958  
Life: 1367d 142630 3.5 4980 2.9 4175

# Tricks-N-Treats Sale



**NOR-BERT MORTY CALINA-ET VG-87**  
DAM OF LOT H27



**NORDIC-HAVEN MTO CALICO-ET VG-88**  
2ND DAM OF LOT H27

## H27

JOE SCHENK  
1456 THUNDERING SPRINGS RD  
DUBLIN, GA 31027  
478-290-3402  
JOEJO2002@BELLSOUTH.NET  
WWW.HOLSTEINWORLD.COM/POPLAR-KNOLL

### Ronelee Toystory Domain-ET

137974489 Excellent-90 \*TV \*TL  
PTA +1389M +45F +35P 79R 8/10  
PTA +6.9PL 2.76SCS +1.2DPR 5%DCE  
PTA +3.23T +2.69UDC +1.73FLC 75R 8/10  
GTPI +2292G

### Nor-Bert Morty Calina-ET

133754355 Very Good-87 VG-MS DOM \*TV  
2-03 2x 333d 32880 3.8 1256 3.3 1081  
• Sold for \$62,500 in 2006 KY National Sale

### SIX #1 EMBRYOS

Exportable

### Jenny-Lou Mrshl Toystory-ET

60372887 \*TR \*TV \*TL  
PTA +1234M +43F +38P 99R 8/10  
PTA +2.14T +2.09UDC +1.39FLC GTPI +1902G

### Ronelee Outside Dabble

134644585 Excellent-91 2E DOM  
3-06 3x 365d 42250 3.6 1525 3.1 1316  
Life: 1418d 146440 3.6 5215 3.2 4653

### Stouder Morty-ET

17349617 EX-CAN GM 2/06 \*TV \*TL  
PTA +1237M +17F +26P 99R 8/10  
PTA +1.70T +1.27UDC +1.40FLC GTPI +1372G

### Nordic-Haven Mto Calico-ET

126142622 Very Good-88 VG-MS @ 3-02 GMD DOM  
2-03 2x 365d 52970 4.0 2132 3.3 1725  
1st National Milk & 3rd National Protein  
• Former #1 CTPI Cow of the Breed

Full sister to Morty Calina

**Nor-Bert Morty Callie-ET VG-88 GMD DOM**  
2-02 2x 365d 42348 4.2 1804 2.8 1180

Maternal sister to Morty Calina

**Nor-Bert Stormatic Cayla-ET VG-88**  
2-02 2x 304d 31561 3.9 1221 3.0 946

3rd Dam

**Kregmol Mandel S-493-ET VG-89 VEVVV GMD**  
4-10 2x 365d 34580 3.5 1215 2.9 992  
Life: 2249d 165310 3.6 5899 3.0 5010

4th Dam

**Jol-Lee Astar Sheryl-ET VG-86 VG-MS GMD DOM**  
3-07 2x 365d 40880 3.1 1263 2.9 1176  
Life: 1311d 107870 3.3 3537 3.1 3321

5th Dam

**Jol-Lee Enhancer Cheryl EX-91 2E GMD DOM**  
4-05 2x 365d 33760 4.2 1430 3.0 1024  
Life: 1583d 135160 4.0 5444 3.1 4164

6th Dam

**Jol-Lee Mark Celeste EX-91 EEEEE 4E GMD DOM**  
6-10 2x 365d 57070 3.9 2224 2.6 1495  
Life: 2187d 162592 3.8 6198 3.1 5096

# Tricks-N-Treats Sale



**BUDJON-JK ENCORE EXPOSE-ET EX-95 2E**  
DAM OF LOT H28



**KRULL BROKER ELEGANCE EX-96 3E**  
2ND DAM OF LOT H28

## H28

RED CARPET HOLSTEINS  
35073 KIRKLAND ROAD  
KIRKLAND, IL 60146  
815-979-5314  
REDCARPETHOLSTEINS@YAHOO.COM  
WWW.REDCARPETHOLSTEINS.COM

### Roylane Jordan-ET

17064727 Excellent-95 GM 2/04 \*TV \*TL  
PTA -340M -8F -13P 99R 8/10  
PTA -2.0PL 3.11SCS +.0DPR 6%DCE  
PTA +1.97T +1.91UDC +.24FLC 99R 8/10  
GTPI +1323G

### Budjon-JK Encore Expose-ET

125791252 Excellent-95 EEEEE 2E GMD DOM  
6-03 2x 365d 44500 3.9 1736 3.1 1397  
3-06 2x 345d 30730 3.8 1170 3.4 1047  
2-08 2x 322d 26480 3.7 974 3.2 857  
Life: 1091d 106090 3.8 4040 3.4 3568  
• *HM All-American Aged Cow 2005*  
• *Res All-American Sr Three-Year-Old 2002*  
• *1st Sr Three-Year-Old & Intermediate*  
*Champ, Eastern Fall National 2002*

### REDCARPET ROY EXCEPTION-ET

68936650  
Born: November 10, 2009

Terms:  
Satisfaction guaranteed - see general terms

### Ked Juror-ET

2124357 Good Plus-82 GM 2/01 \*TV \*TL \*TD  
PTA -124M -9F -7P 99R 8/10  
PTA +.79T +.73UDC -.94FLC GTPI +1286G

### Firdell Aerostar Babette-ET

14504541 Excellent-90 VEVVE GMD DOM  
3-02 2x 365d 41140 3.9 1592 3.2 1323  
2-01 2x 344d 31570 3.8 1199 3.3 1027

### Marcrest Encore

2048702 Excellent-96 GM 2/99 \*TV \*TL  
PTA -916M -24F -27P 99R 8/10  
PTA +1.02T +.65UDC -.26FLC GTPI +1002

### Krull Broker Elegance

15395294 Excellent-96 EEEEE 3E GMD DOM \*TL  
5-07 2x 365d 40950 3.7 1522 3.3 1350  
Life: 2356d 183710 3.7 6878 3.4 6267  
• *HM All-American Aged Cow 1999*  
• *HM All-Canadian Mature Cow 1999*

*Maternal sisters to Encore Expose*

### Budjon-JK Linjet Eileen-ET EX-96 3E GMD DOM

5-06 2x 365d 44703 3.7 1647 3.1 1381  
Life: 1481d 139720 3.6 5063 3.5 4821

• *Res All-American Aged Cow 2005*

• *All-American 5-Year-Old Cow 2004*

### Budjon-JK Encore Electra-ET EX-95 2E GMD DOM

6-04 2x 365d 46830 4.0 1866 3.0 1382  
Life: 1806d 192280 3.6 6858 3.2 6097

• *HM All-American 125,000 Lb Cow 2005*

• *HM All-American Aged Cow 2004*

• *Res All-American Sr 3-Yr-Old Cow 2001*

### 4th Dam

#### Krull Starbuck Excellency EX-90 GMD DOM

3-03 2x 365d 27140 3.5 937 3.4 930

### 5th Dam

#### Krull TT Excellency EX-90 VEEE DOM

3-02 2x 363d 24319 3.5 862 3.4 829  
Life: 1733d 109780 3.7 4077 3.3 3605

### 6th Dam

#### Krull Boot Mark Excellency EX-92 2E GMD

6-06 2x 365d 27410 3.8 1040 3.1 868  
Life: 3026d 201440 3.5 7105 3.0 4634

### 7th Dam

#### Krull Kingstead Excellency EX-92 4E GMD

12-4 2x 323d 21920 3.5 772  
Life: 3364d 179790 3.6 6436

# Tricks-N-Treats Sale



JAKES-ACRES AST SYMPHONY-ET VG-88  
DAM OF LOT H29

## H29

RED CARPET HOLSTEINS  
35073 KIRKLAND ROAD  
KIRKLAND, IL 60146  
815-979-5314  
REDCARPETHOLSTEINS@YAHOO.COM  
WWW.REDCARPETHOLSTEINS.COM

### KHW Kite Advent-Red-ET

133002953 Excellent-94 \*TV \*TL \*TD  
PTA -1252M -19F -28P 99R 8/10  
PTA +.9PL 3.06SCS +1.7DPR 10%DCE  
PTA +2.39T +2.16UDC +1.60FLC 99R 8/10  
GTPI +1428G

### Jakes-Acres Ast Symphony-ET

136265946 Very Good-88 EVVEV @ 4-01  
2-03 2x 305d 21240 3.8 803 3.3 702

- Reserve All-American Winter Yearling 2003
- 1st Winter Yearling, Mid-W Sprg Nat'l 2003
- 2nd Winter Yearling, WDE 2003
- All-American Winter Heifer Calf 2002
- 2nd Winter Heifer Calf, WDE 2002

### REDCARPET ADV SIGNIFICANCE

69447093 \*RC  
Born: December 20, 2009

Terms:  
Satisfaction guaranteed - see general terms

### Markwell Kite-ET

128460878 EX-CAN ST'04 \*RC \*TV \*TL  
PTA -1295M -27F -39P 99R 8/10  
PTA +2.00T +1.13UDC -.29FLC GTPI +845G

### Kamps-Hollow Altitude-ET

129136431 Excellent-95 EEEEE 2E DOM \*RC \*CV  
2-00 2x 365d 28830 3.8 1097 3.5 1013  
4-03 2x 365d 30430 4.2 1267 3.1 956

### Oseeana Astronomical-ET

129355919 EX-95-CAN ST'04 \*TV \*TL  
PTA -885M -54F -24P 99R 8/10  
PTA +1.58T +.11UDC +1.11FLC GTPI +940G

### Belco Susanna A

6611595C Excellent-94 EEEEE 2E  
3-03 2x 311d 19123 4.2 794 3.3 626  
4-03 2x 334d 16925 3.8 650 3.4 573  
2-01 2x 321d 15851 4.3 675 3.4 540

- 2nd Aged Cow, Mideast Fall National 2002

# Tricks-N-Treats Sale



**SCIENTIFIC DELUXE RAE-ETS VG-87**  
DAM OF LOT H30



**SCIENTIFIC DEBUTANTE RAE-ET EX-92**  
2ND DAM OF LOT H30

## H30

NEIL MCDONAH  
W21205 SOUTH STREET  
TREMPEALEAU, WI 54661  
608-385-1592  
NMCDONAH@HOTMAIL.COM

### Regancrest Altalota-ET

61898306 \*TV \*TL  
PTA +815M +66F +42P 92R 8/10  
PTA +3.4PL 2.80SCS +1.3DPR 7%DCE  
PTA +2.27T +2.01UDC +1.22FLC 90R 8/10  
GTPI +2135G

### Scientific Deluxe Rae-ET

1398904205 Very Good-87 VG-MS @ 2-07 \*TR \*TV  
GTPI +1986 +620M +49F +29P +3.03T 8/10  
2-00 2x 143d 12162 4.1 480 3.3 401 RIP

## FOUR #1 EMBRYOS

Exportable

### O-Bee Manfred Justice-ET

122358313 Excellent-94 GM 8/08 \*TR \*TV \*TL \*TD  
PTA +741M +66F +47P 99R 8/10  
PTA +.16T -.28UDC +1.05FLC GTPI +2089G

### Regancrest Ito Isa

60870571 Very Good-86 VG-MS @ 2-09  
2-00 2x 365d 31510 3.6 1143 3.5 1110

### Picston Shottle-ET

GBR 598172 EX-95-GBR GM 8/08 \*TV \*TL  
PTA +1307M +66F +37P 99R 8/10  
PTA +3.11T +2.23UDC +2.16FLC GTPI +2078G

### Scientific Debutante Rae-ET

132416603 EX-92 EEEEE GMD DOM \*RC \*CV  
GTPI +1680 +3.06T +2.19UDC +2.10FLC 8/10  
2-02 2x 365d 32930 4.4 1440 3.4 1132  
• All-American 4-Year-Old 2005  
• Res Senior & Grand Champion, World Dairy Expo 2005  
• Sons in AI

### 3rd Dam

**Scientific Jubilant Rae-ET EX-90 DOM \*RC**  
5-11 2x 365d 38880 4.1 1608 3.6 1403  
Life: 1394d 117590 4.0 4707 3.6 4242

### 4th Dam

**C Hanoverhill Tony Rae EX-96 3E GMD DOM 5\***  
6-11 3x 365d 40220 4.1 1661 3.3 1331  
Life: 2247d 166396 4.1 6904 3.4 5612

• HM All-American Junior 2-Year-Old 1988

### 5th Dam

**C Hanoverhill TT Roxette-ET EX-94 2E GMD**  
10-0 3x 365d 35040 4.3 1518 3.0 1063  
Life: 2104d 164789 4.1 6760 3.1 3587

### 6th Dam

**Mil-R-Mor Roxette EX-90 EEEV GMD DOM 30\***  
Life: 2150d 121417 4.7 5725

### 7th Dam

**C Glenridge Citation Roxy EX-97 4E GMD 6\***  
10-1 2x 365d 25280 4.2 1061  
Life: 3620d 209784 4.5 9471  
'Queen of the Breed'

### 8th Dam

**C Norton Court Model Vee EX-90**  
Life: 4183d 218629 3.9 8581

• All-American Produce of Dam 1977 - 1979

### 9th Dam

**Norton Court Reflection Val VG-85 5\***  
Life: 14 Lact 249583 3.7 9295